

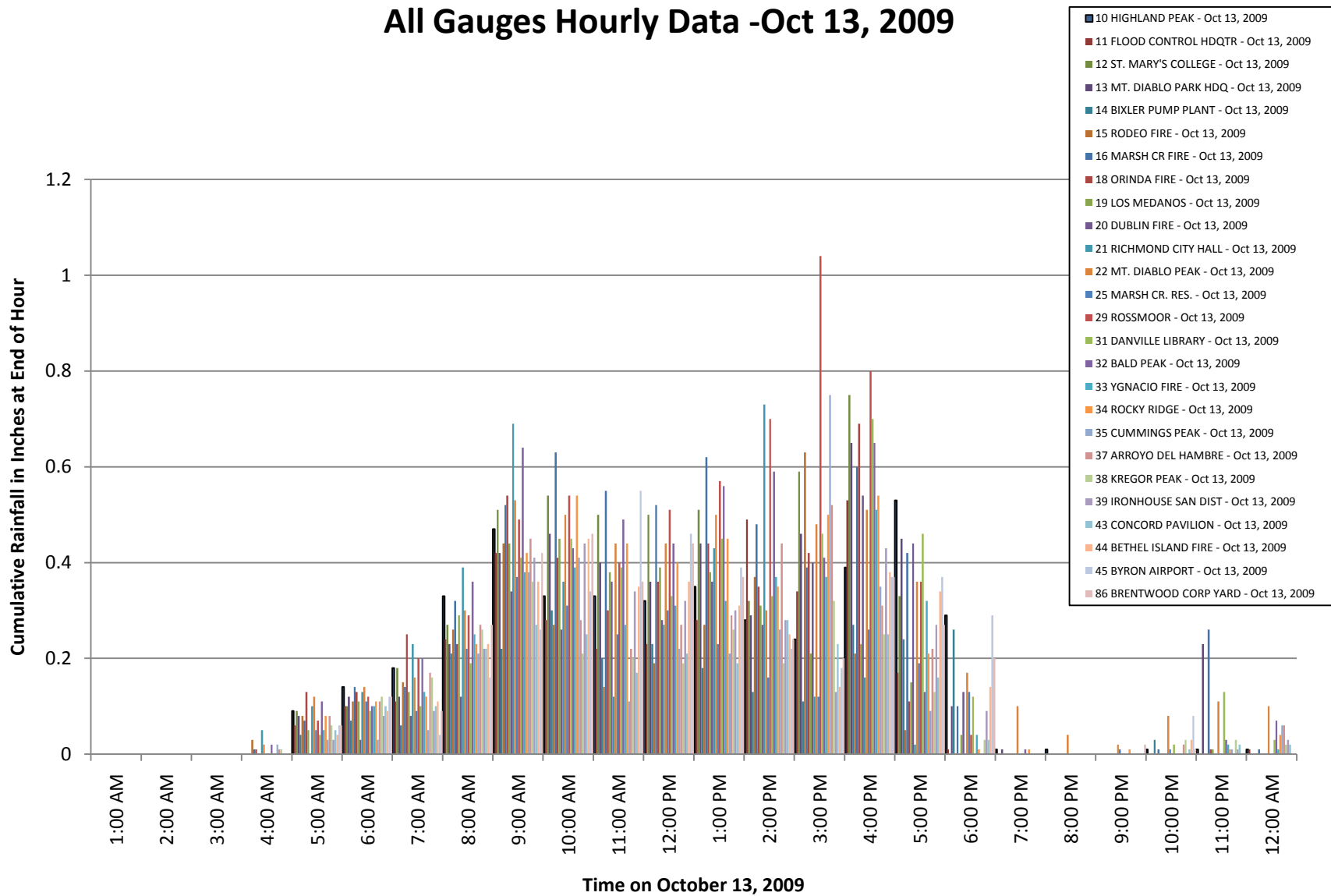
October 13, 2009 Hourly Rainfall Data

| Gauge No. | 10 | 11 | 12 | 13 | 14 | 15 | 16 | 18 | 19 | 20 | 21 | 22 | 25 | 29 |
|-----------|---------------|---------------------|--------------------|---------------------|-------------------|------------|---------------|-------------|-------------|-------------|--------------------|-----------------|----------------|----------|
| Time | HIGHLAND PEAK | FLOOD CONTROL HDQTR | ST. MARY'S COLLEGE | MT. DIABLO PARK HDQ | BIXLER PUMP PLANT | RODEO FIRE | MARSH CR FIRE | ORINDA FIRE | LOS MEDANOS | DUBLIN FIRE | RICHMOND CITY HALL | MT. DIABLO PEAK | MARSH CR. RES. | ROSSMOOR |
| 1:00 | | | | | | | | | | | | | | |
| 2:00 | | | | | | | | | | | | | | |
| 3:00 | | | | | | | | | | | | | | |
| 4:00 | | | | | | 0.03 | 0.01 | 0.01 | | | 0.05 | 0.02 | | |
| 5:00 | 0.09 | 0.06 | 0.09 | 0.08 | 0.04 | 0.08 | 0.07 | 0.13 | 0.05 | | 0.10 | 0.12 | 0.05 | 0.07 |
| 6:00 | 0.14 | 0.10 | 0.10 | 0.12 | 0.07 | 0.11 | 0.14 | 0.13 | 0.11 | 0.03 | 0.13 | 0.14 | 0.11 | 0.12 |
| 7:00 | 0.18 | 0.11 | 0.18 | 0.12 | 0.06 | 0.15 | 0.14 | 0.25 | 0.13 | 0.08 | 0.23 | 0.16 | 0.09 | 0.20 |
| 8:00 | 0.33 | 0.24 | 0.27 | 0.23 | 0.21 | 0.26 | 0.32 | 0.23 | 0.29 | 0.12 | 0.39 | 0.30 | 0.22 | 0.29 |
| 9:00 | 0.47 | 0.42 | 0.51 | 0.42 | 0.22 | 0.44 | 0.52 | 0.54 | 0.44 | 0.34 | 0.69 | 0.53 | 0.37 | 0.49 |
| 10:00 | 0.33 | 0.28 | 0.54 | 0.46 | 0.30 | 0.27 | 0.63 | 0.41 | 0.45 | 0.26 | 0.36 | 0.50 | 0.31 | 0.54 |
| 11:00 | 0.33 | 0.22 | 0.50 | 0.40 | 0.20 | 0.14 | 0.55 | 0.30 | 0.38 | 0.36 | 0.12 | 0.44 | 0.25 | 0.40 |
| 12:00 | 0.32 | 0.23 | 0.50 | 0.36 | 0.23 | 0.19 | 0.52 | 0.36 | 0.39 | 0.28 | 0.27 | 0.44 | 0.30 | 0.51 |
| 13:00 | 0.35 | 0.28 | 0.51 | 0.44 | 0.18 | 0.27 | 0.62 | 0.44 | 0.38 | 0.36 | 0.43 | 0.50 | 0.23 | 0.57 |
| 14:00 | 0.28 | 0.49 | 0.32 | 0.29 | 0.13 | 0.37 | 0.48 | 0.35 | 0.31 | 0.27 | 0.73 | 0.30 | 0.16 | 0.70 |
| 15:00 | 0.24 | 0.34 | 0.59 | 0.46 | 0.11 | 0.63 | 0.39 | 0.42 | 0.21 | 0.40 | 0.12 | 0.48 | 0.12 | 1.04 |
| 16:00 | 0.39 | 0.53 | 0.75 | 0.65 | 0.27 | 0.21 | 0.60 | 0.69 | 0.23 | 0.54 | 0.16 | 0.51 | 0.26 | 0.80 |
| 17:00 | 0.53 | 0.17 | 0.33 | 0.45 | 0.24 | 0.05 | 0.42 | 0.11 | 0.15 | 0.44 | 0.02 | 0.36 | 0.19 | 0.36 |
| 18:00 | 0.29 | 0.01 | | 0.10 | 0.26 | | 0.10 | | 0.04 | 0.13 | | 0.17 | 0.13 | 0.04 |
| 19:00 | 0.01 | | | 0.01 | | | | | | | | 0.10 | | |
| 20:00 | 0.01 | | | | | | | | | | | 0.04 | | |
| 21:00 | | | | | | | | | | | | 0.02 | 0.01 | |
| 22:00 | 0.01 | | | | 0.03 | | 0.01 | | | | | 0.08 | 0.01 | |
| 23:00 | 0.01 | | | 0.23 | | | 0.26 | 0.01 | 0.01 | | | 0.11 | | |
| 0:00 | 0.01 | 0.01 | | | | | 0.01 | | | | | 0.10 | | |

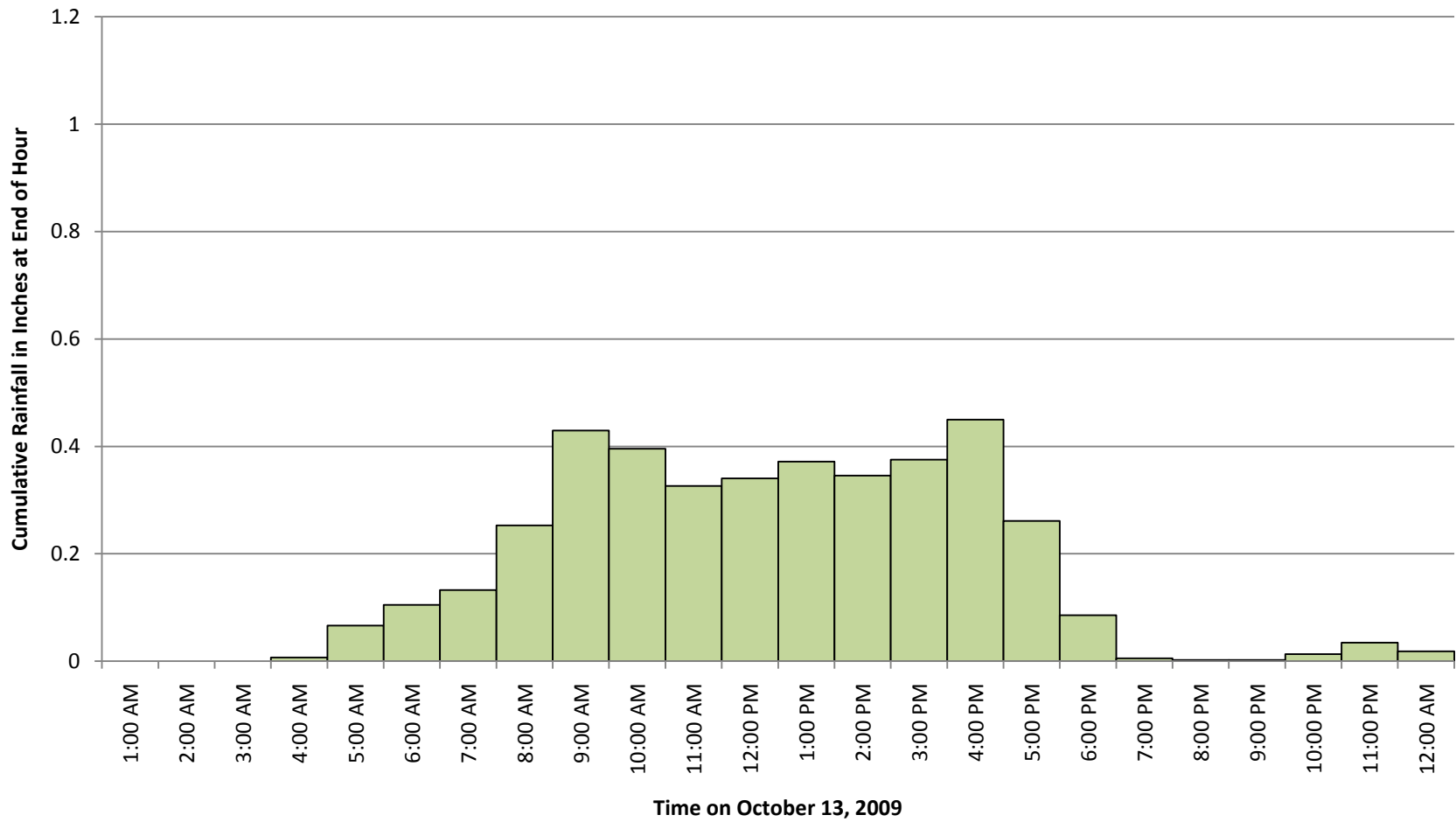
October 13, 2009 Hourly Rainfall Data

| Gauge No. | 31 | 32 | 33 | 34 | 35 | 37 | 38 | 39 | 43 | 44 | 45 | 86 | Average Of All Gauges |
|-----------|------------------|-----------|--------------|-------------|---------------|-------------------|-------------|--------------------|------------------|--------------------|---------------|---------------------|-----------------------|
| Time | DANVILLE LIBRARY | BALD PEAK | YGNACIO FIRE | ROCKY RIDGE | CUMMINGS PEAK | ARROYO DEL HAMBRE | KREGOR PEAK | IRONHOUSE SAN DIST | CONCORD PAVILION | BETHEL ISLAND FIRE | BYRON AIRPORT | BRENTWOOD CORP YARD | |
| 1:00 | | | | | | | | | | | | | |
| 2:00 | | | | | | | | | | | | | |
| 3:00 | | | | | | | | | | | | | |
| 4:00 | | 0.02 | | | 0.02 | 0.01 | 0.01 | | | | | | 0.01 |
| 5:00 | 0.04 | 0.11 | 0.05 | 0.08 | 0.03 | 0.08 | 0.06 | 0.03 | 0.05 | 0.04 | 0.06 | 0.06 | 0.07 |
| 6:00 | 0.09 | 0.10 | 0.10 | 0.11 | 0.03 | 0.11 | 0.12 | 0.08 | 0.10 | 0.09 | 0.12 | 0.12 | 0.10 |
| 7:00 | 0.10 | 0.20 | 0.13 | 0.12 | 0.05 | 0.17 | 0.16 | 0.09 | 0.10 | 0.11 | 0.04 | 0.09 | 0.13 |
| 8:00 | 0.19 | 0.36 | 0.25 | 0.23 | 0.21 | 0.27 | 0.26 | 0.22 | 0.22 | 0.23 | 0.16 | 0.27 | 0.25 |
| 9:00 | 0.41 | 0.64 | 0.38 | 0.42 | 0.38 | 0.45 | 0.36 | 0.41 | 0.27 | 0.36 | 0.26 | 0.42 | 0.43 |
| 10:00 | 0.45 | 0.43 | 0.39 | 0.54 | 0.41 | 0.28 | 0.21 | 0.44 | 0.25 | 0.45 | 0.34 | 0.46 | 0.40 |
| 11:00 | 0.39 | 0.49 | 0.27 | 0.44 | 0.11 | 0.22 | 0.20 | 0.34 | 0.17 | 0.35 | 0.55 | 0.36 | 0.33 |
| 12:00 | 0.33 | 0.44 | 0.31 | 0.40 | 0.22 | 0.27 | 0.19 | 0.32 | 0.21 | 0.36 | 0.46 | 0.44 | 0.34 |
| 13:00 | 0.45 | 0.56 | 0.32 | 0.45 | 0.21 | 0.29 | 0.26 | 0.30 | 0.19 | 0.31 | 0.39 | 0.37 | 0.37 |
| 14:00 | 0.33 | 0.59 | 0.37 | 0.35 | 0.26 | 0.44 | 0.19 | 0.28 | 0.28 | 0.25 | 0.22 | 0.24 | 0.35 |
| 15:00 | 0.46 | 0.41 | 0.37 | 0.50 | 0.75 | 0.52 | 0.32 | 0.13 | 0.23 | 0.14 | 0.18 | 0.20 | 0.38 |
| 16:00 | 0.70 | 0.65 | 0.51 | 0.54 | 0.35 | 0.31 | 0.25 | 0.43 | 0.25 | 0.38 | 0.37 | 0.37 | 0.45 |
| 17:00 | 0.46 | 0.13 | 0.32 | 0.21 | 0.09 | 0.22 | 0.13 | 0.27 | 0.16 | 0.34 | 0.37 | 0.27 | 0.26 |
| 18:00 | 0.12 | | 0.04 | 0.01 | | | 0.03 | 0.09 | 0.03 | 0.14 | 0.29 | 0.20 | 0.09 |
| 19:00 | | 0.01 | | 0.01 | | | | | | | | | 0.01 |
| 20:00 | | | | | | | | | | | | | 0.00 |
| 21:00 | | | | 0.01 | | | | | | | | 0.02 | 0.00 |
| 22:00 | 0.02 | | | | | 0.02 | 0.03 | | 0.01 | 0.03 | 0.08 | 0.01 | 0.01 |
| 23:00 | 0.13 | 0.03 | 0.02 | 0.01 | 0.01 | | 0.03 | 0.01 | 0.02 | | | | 0.03 |
| 0:00 | 0.03 | 0.07 | 0.01 | 0.04 | 0.06 | 0.06 | 0.02 | 0.03 | 0.02 | | | | 0.02 |

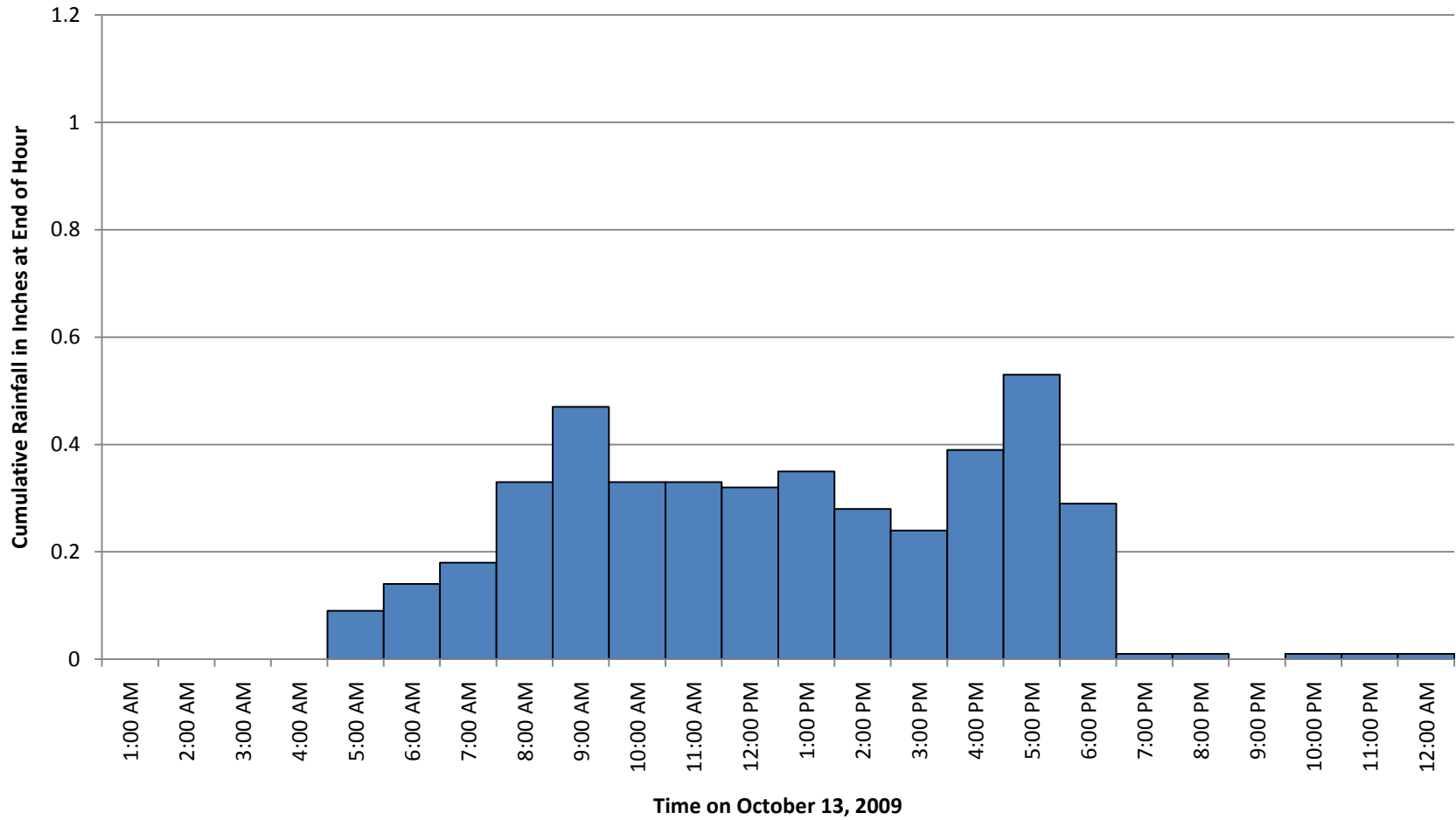
All Gauges Hourly Data -Oct 13, 2009



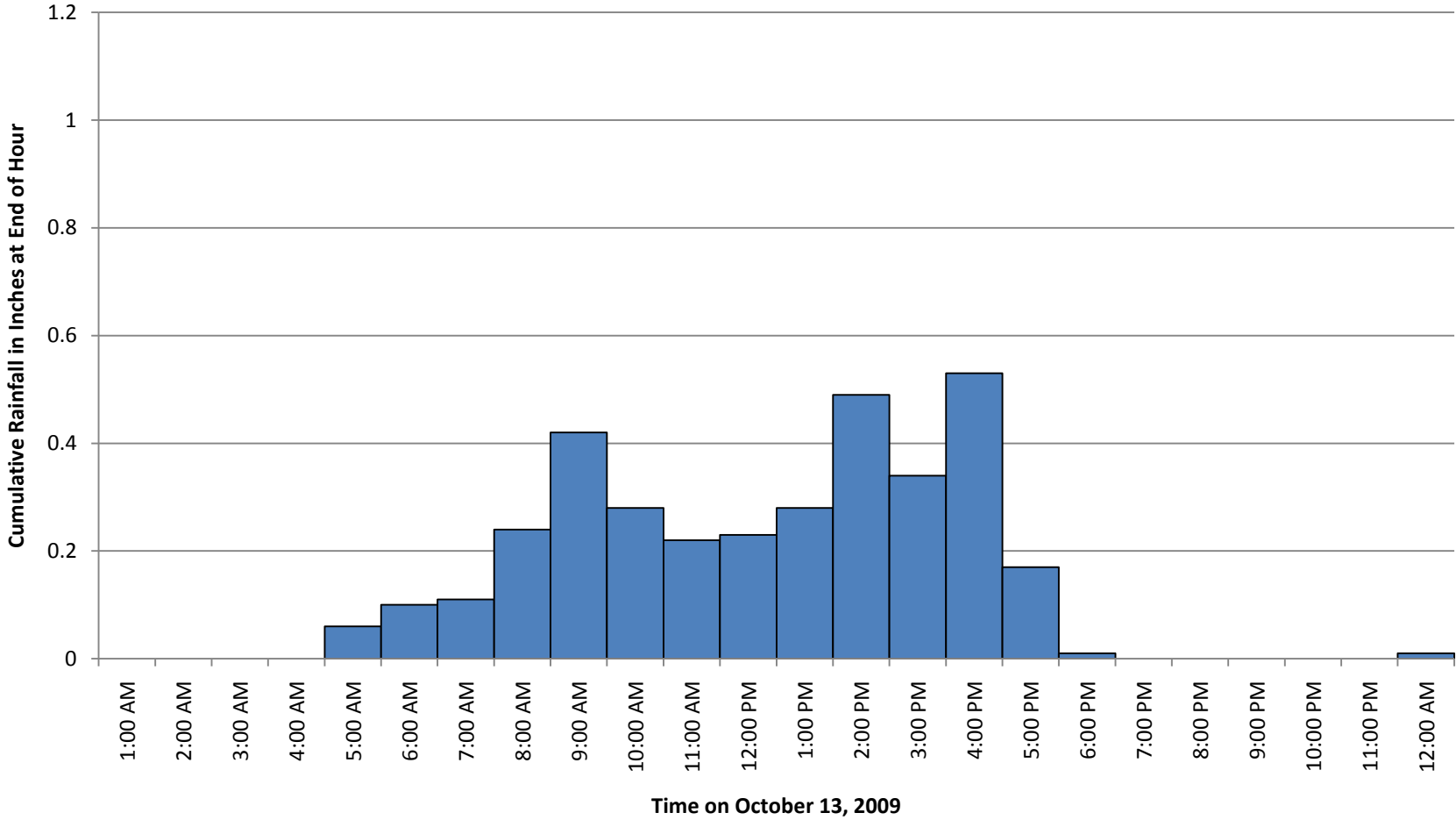
Average Of All Gauges - Oct 13, 2009



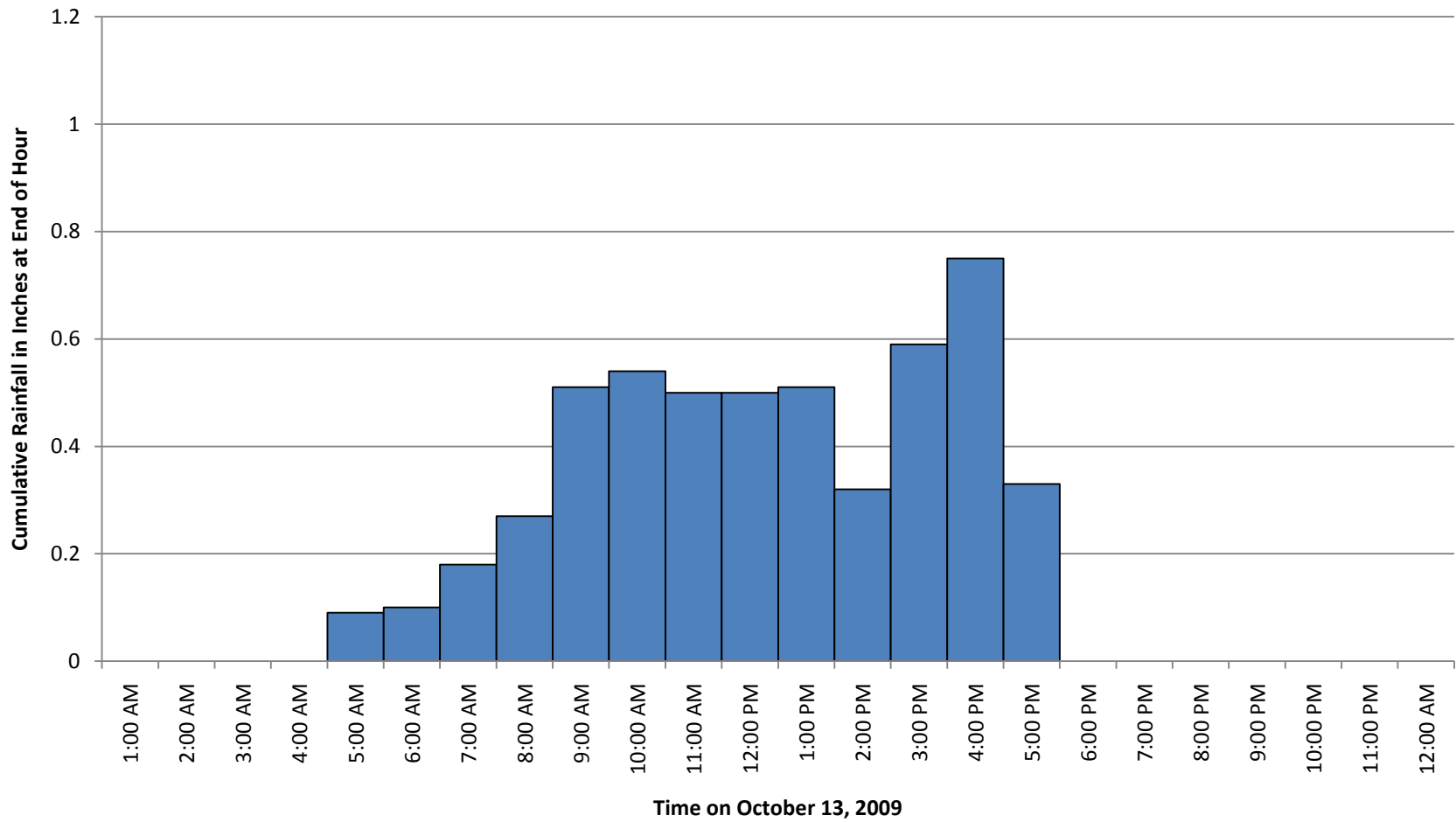
10 HIGHLAND PEAK - Oct 13, 2009



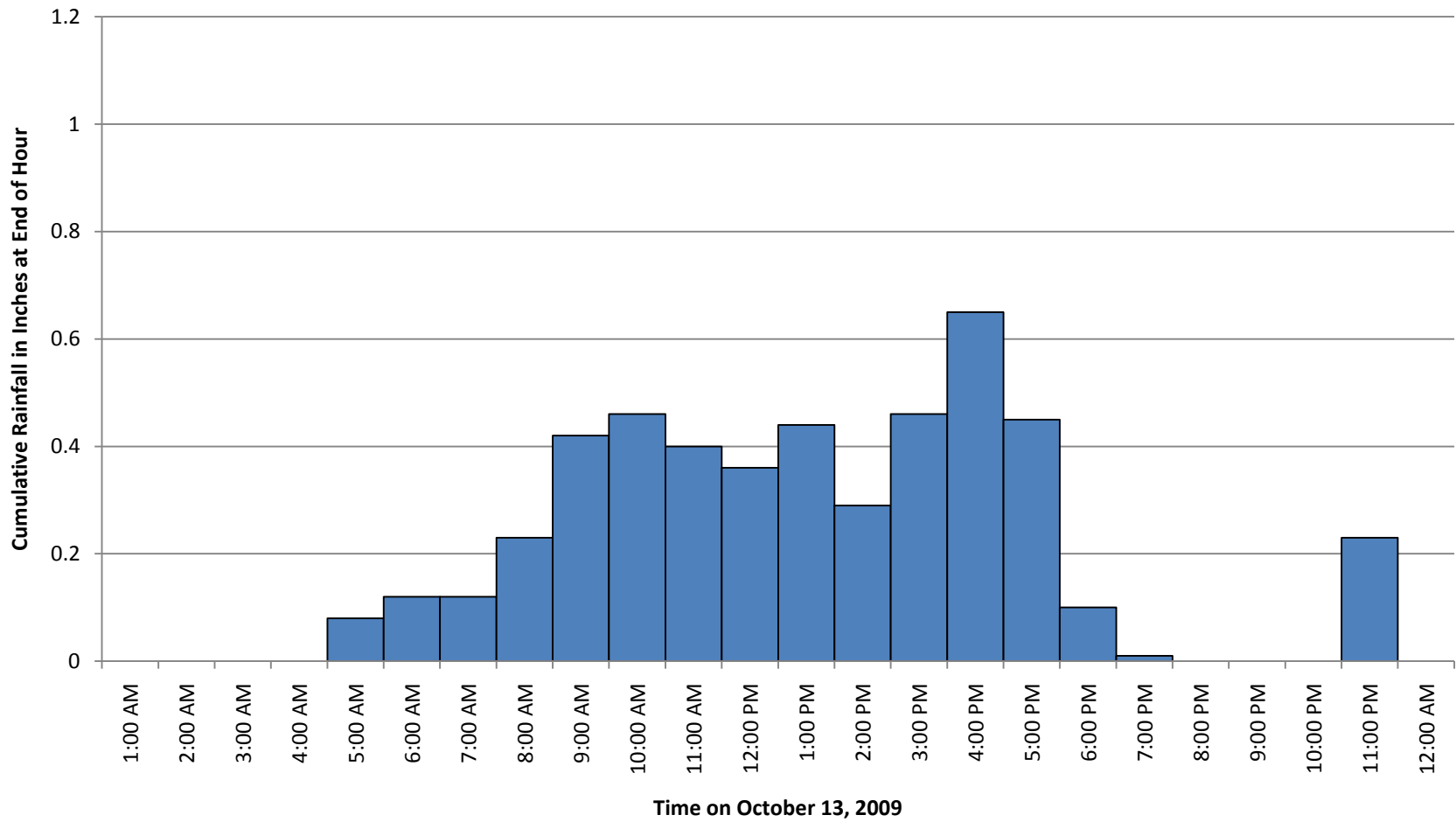
11 FLOOD CONTROL HDQTR - Oct 13, 2009



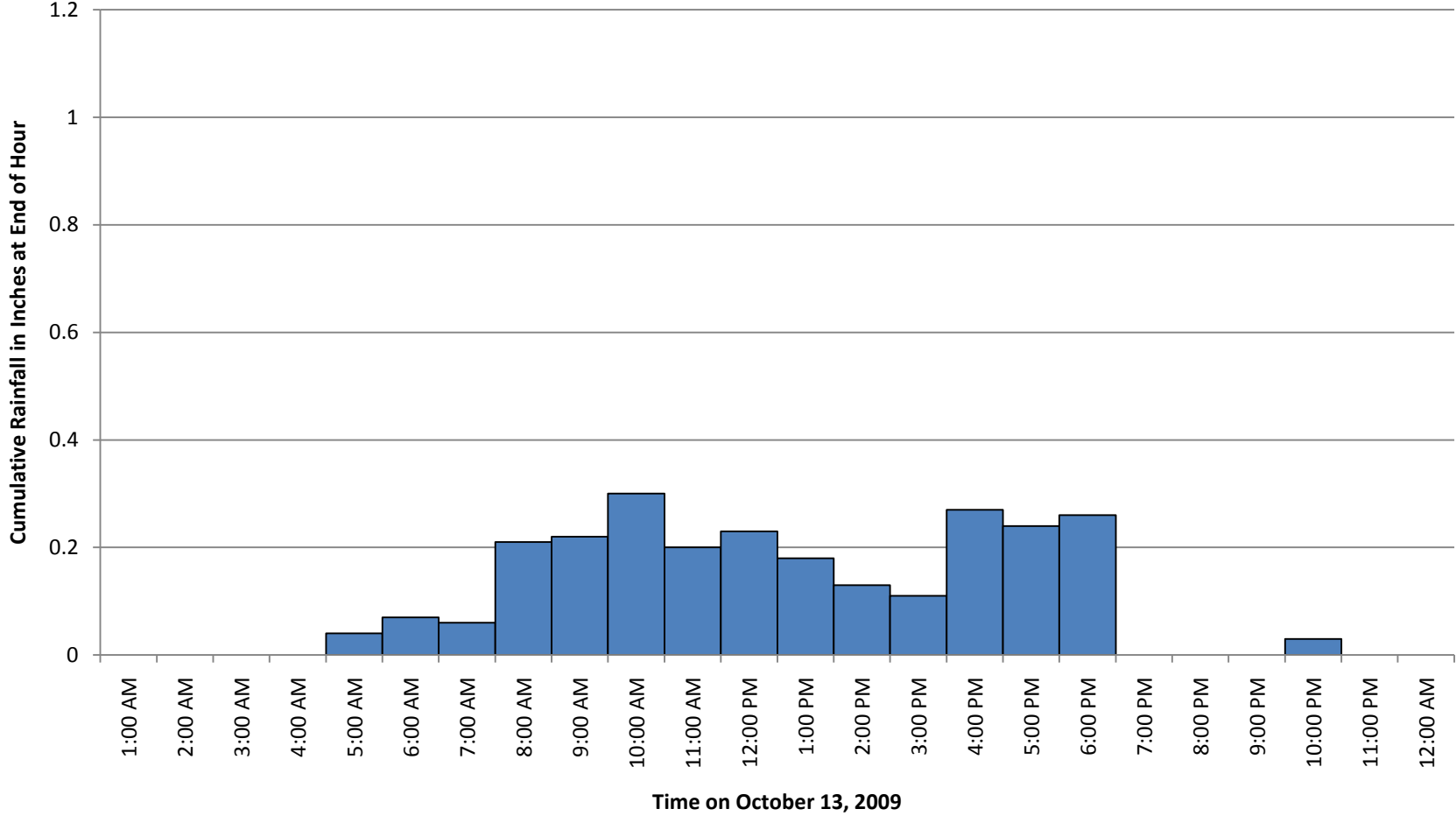
12 ST. MARY'S COLLEGE - Oct 13, 2009



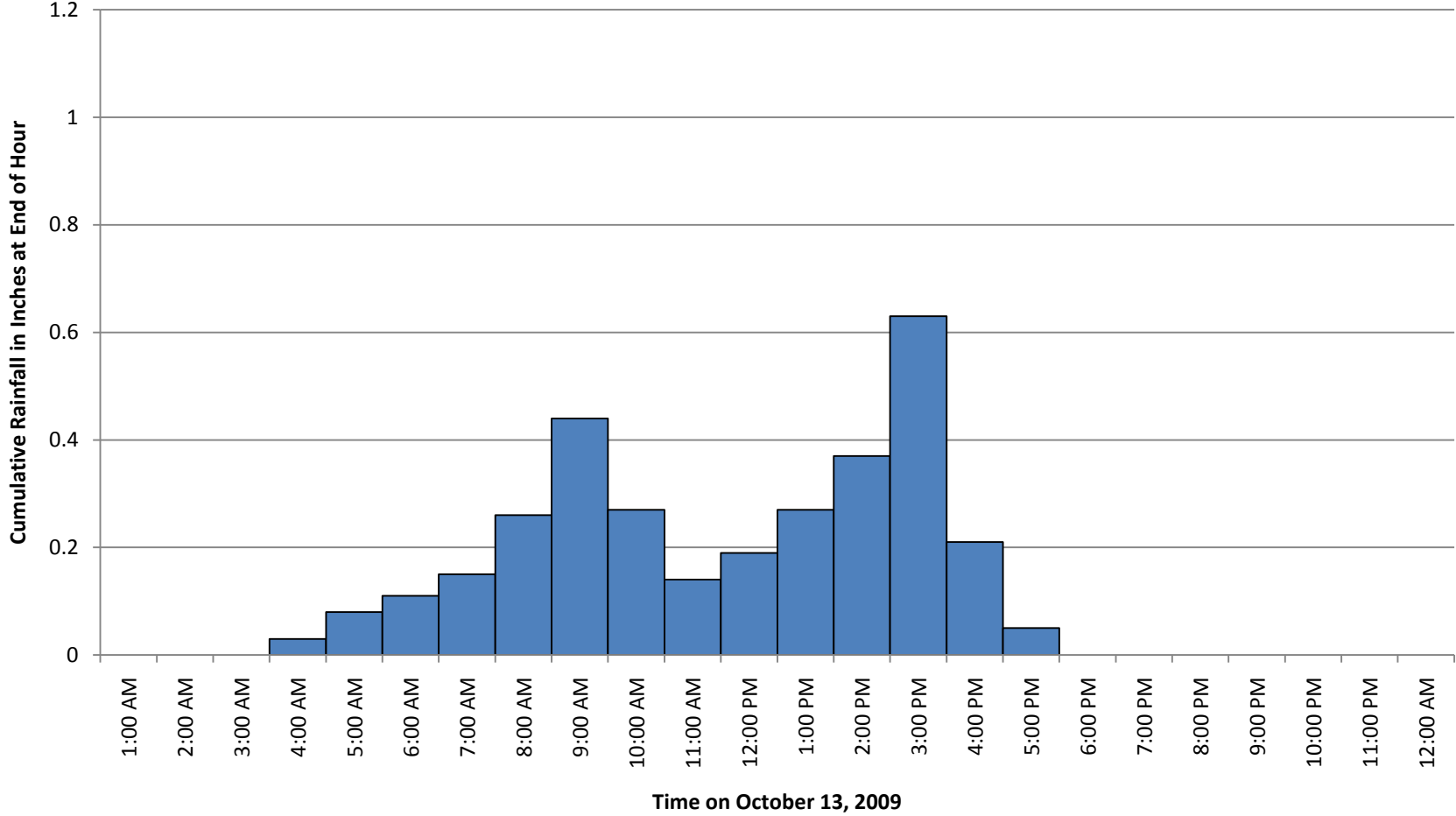
13 MT. DIABLO PARK HDQ - Oct 13, 2009



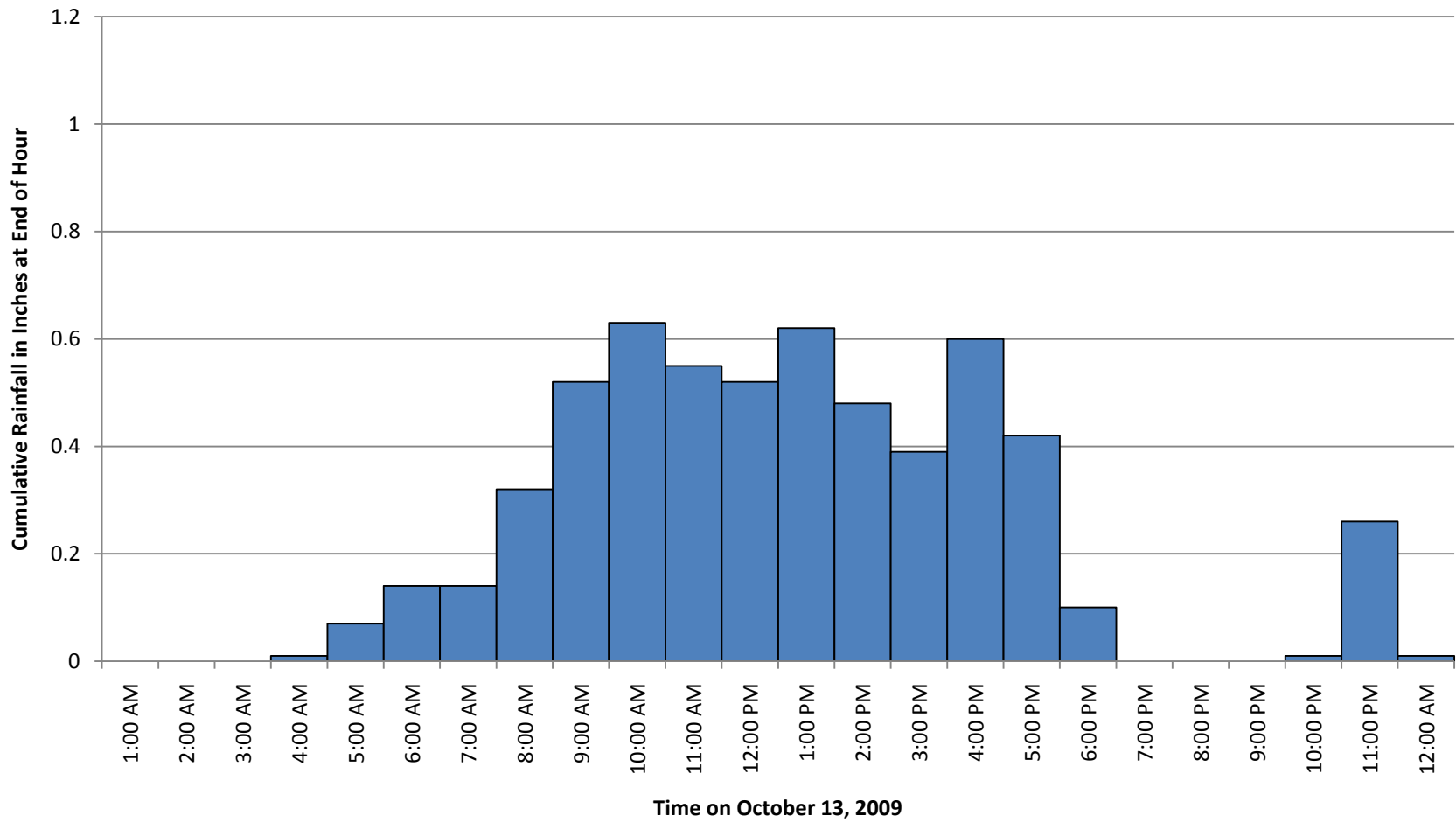
14 BIXLER PUMP PLANT - Oct 13, 2009



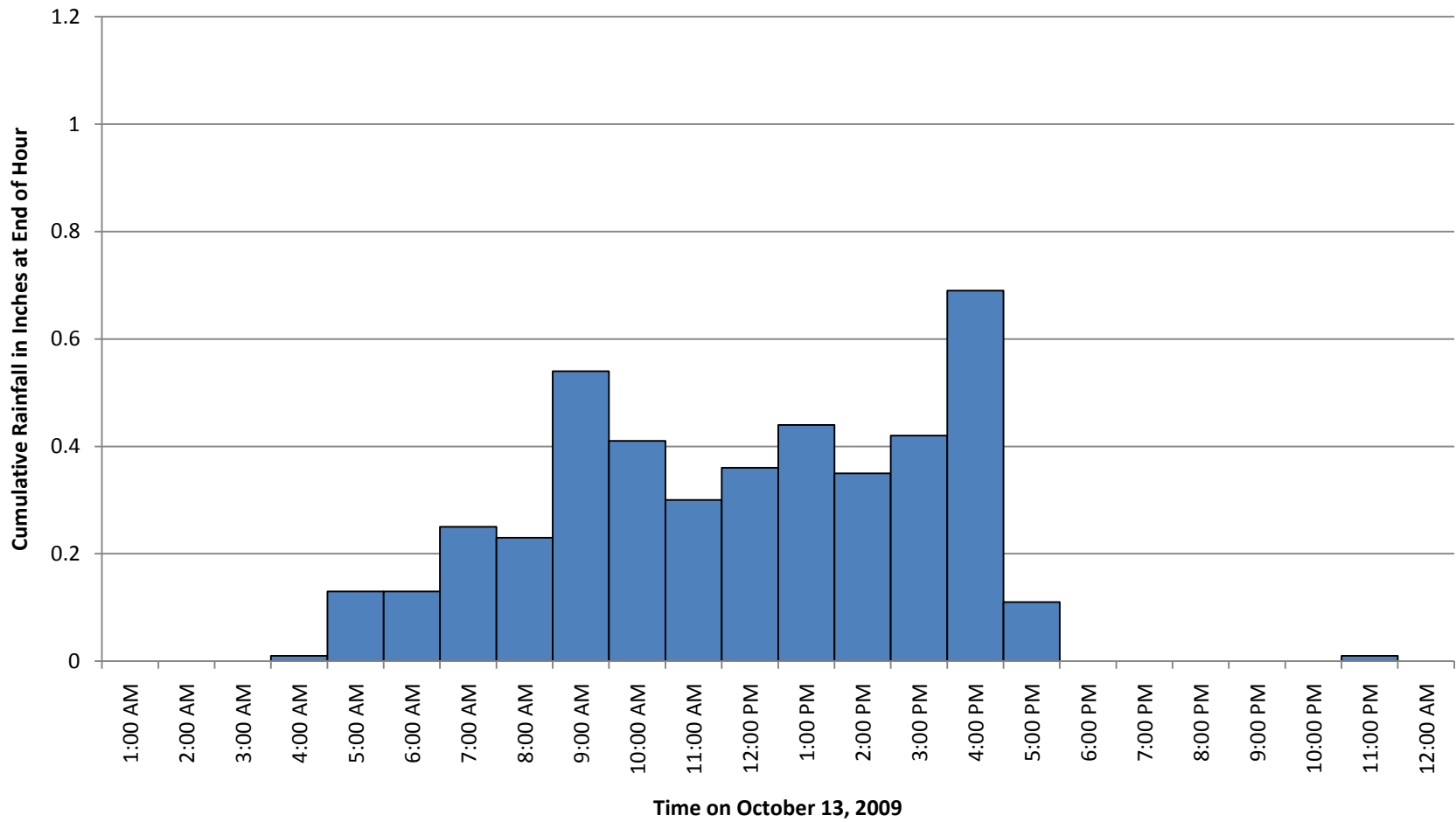
15 RODEO FIRE - Oct 13, 2009



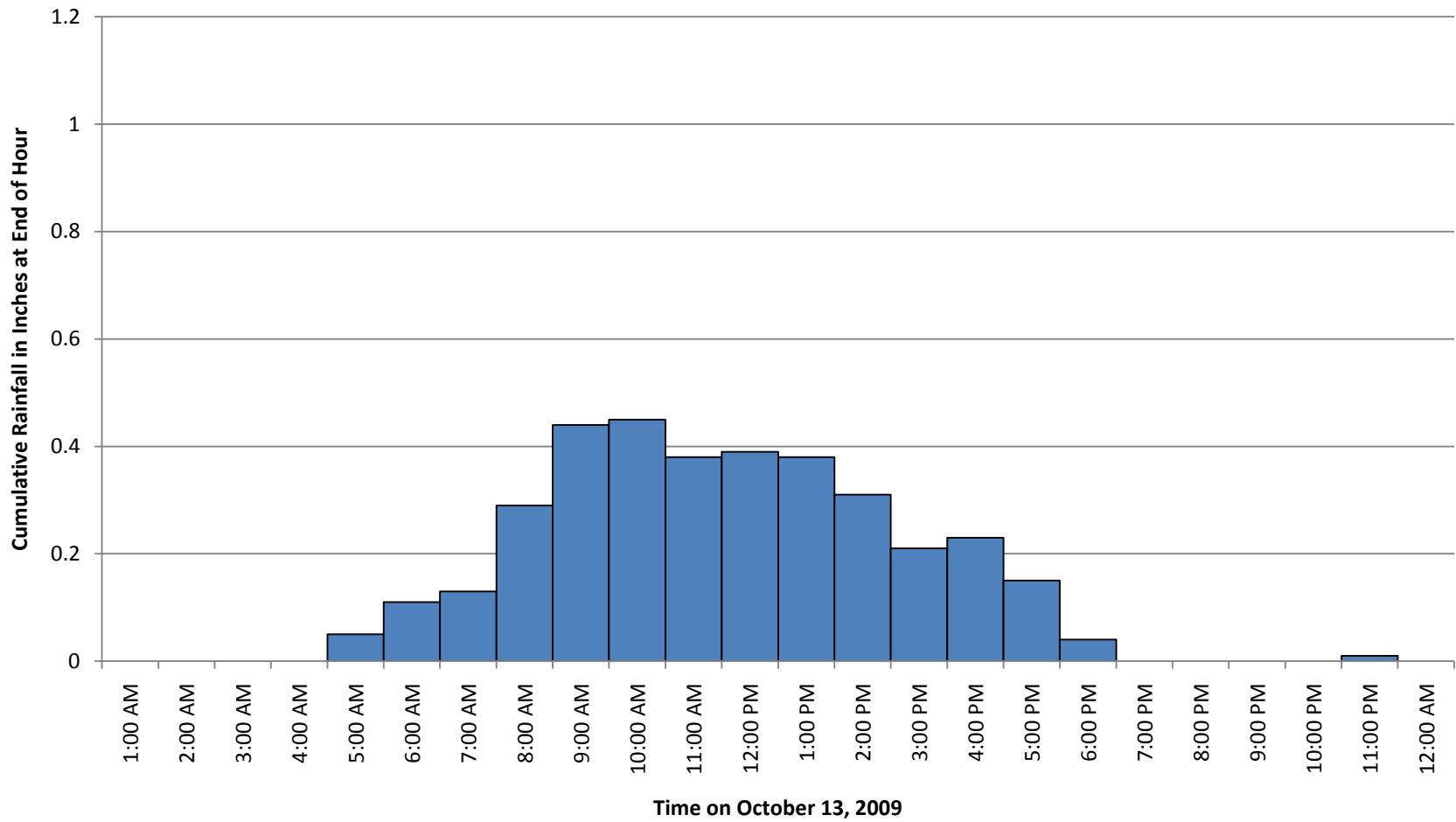
16 MARSH CR FIRE - Oct 13, 2009



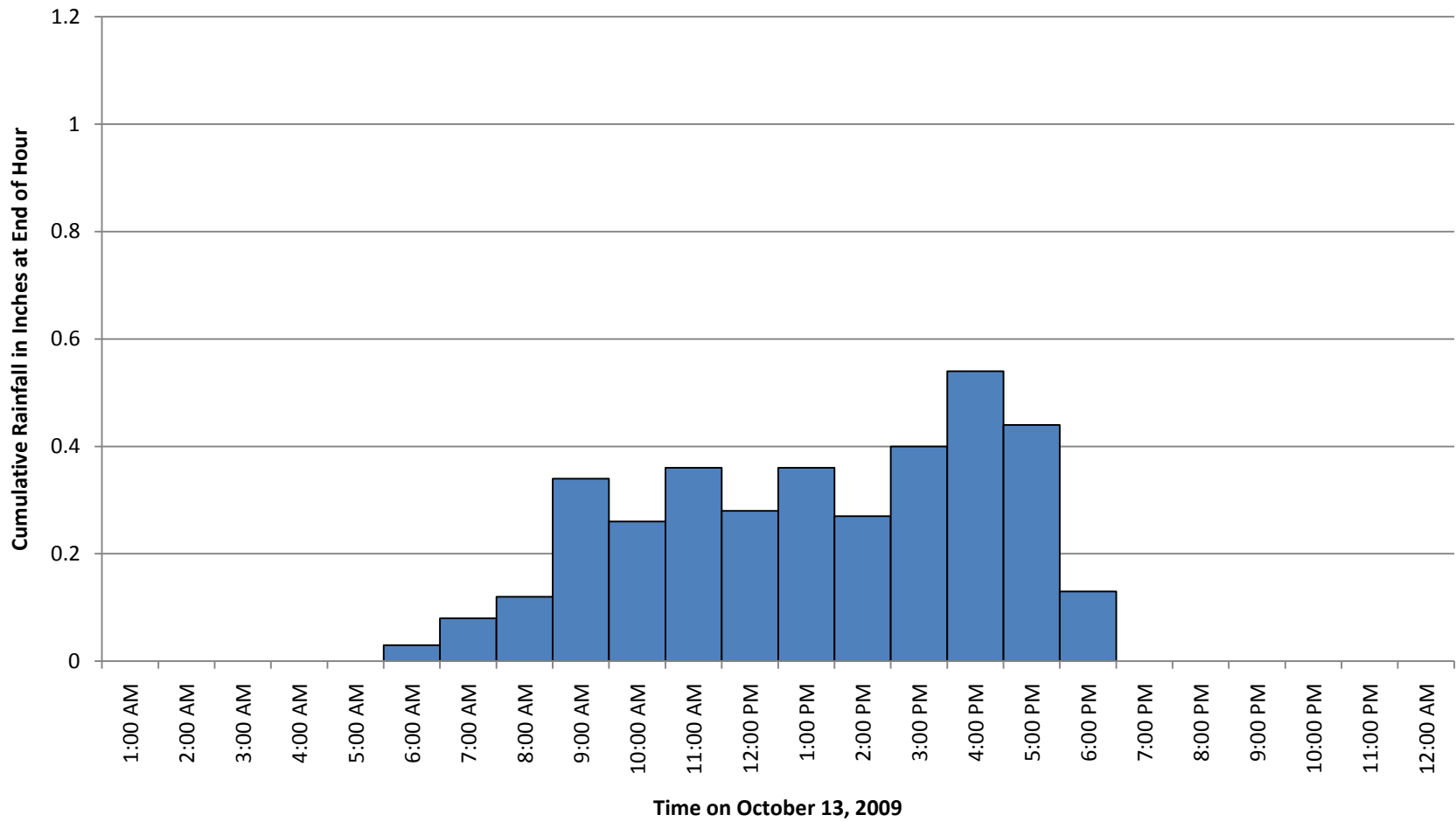
18 ORINDA FIRE - Oct 13, 2009



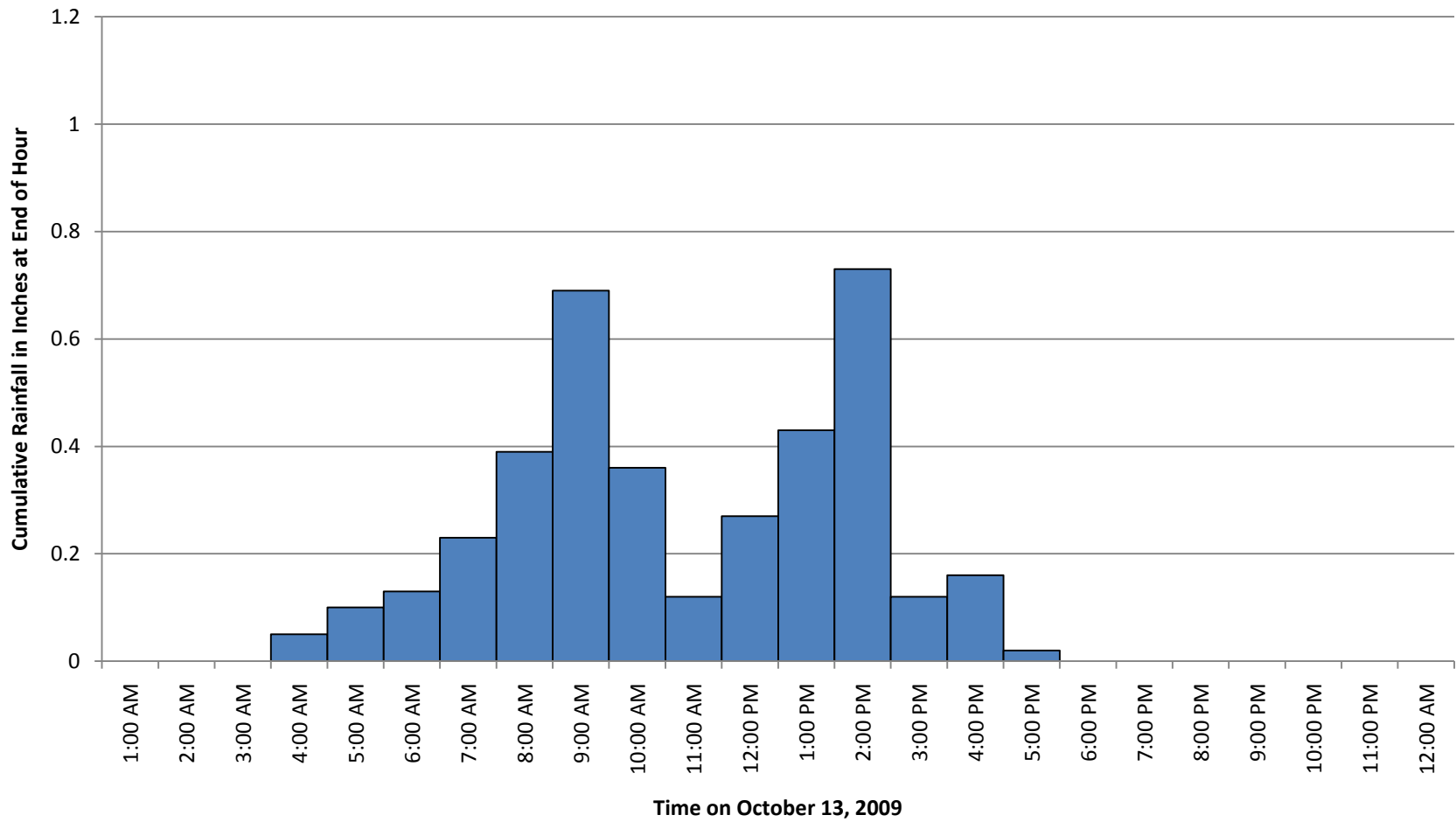
19 LOS MEDANOS - Oct 13, 2009



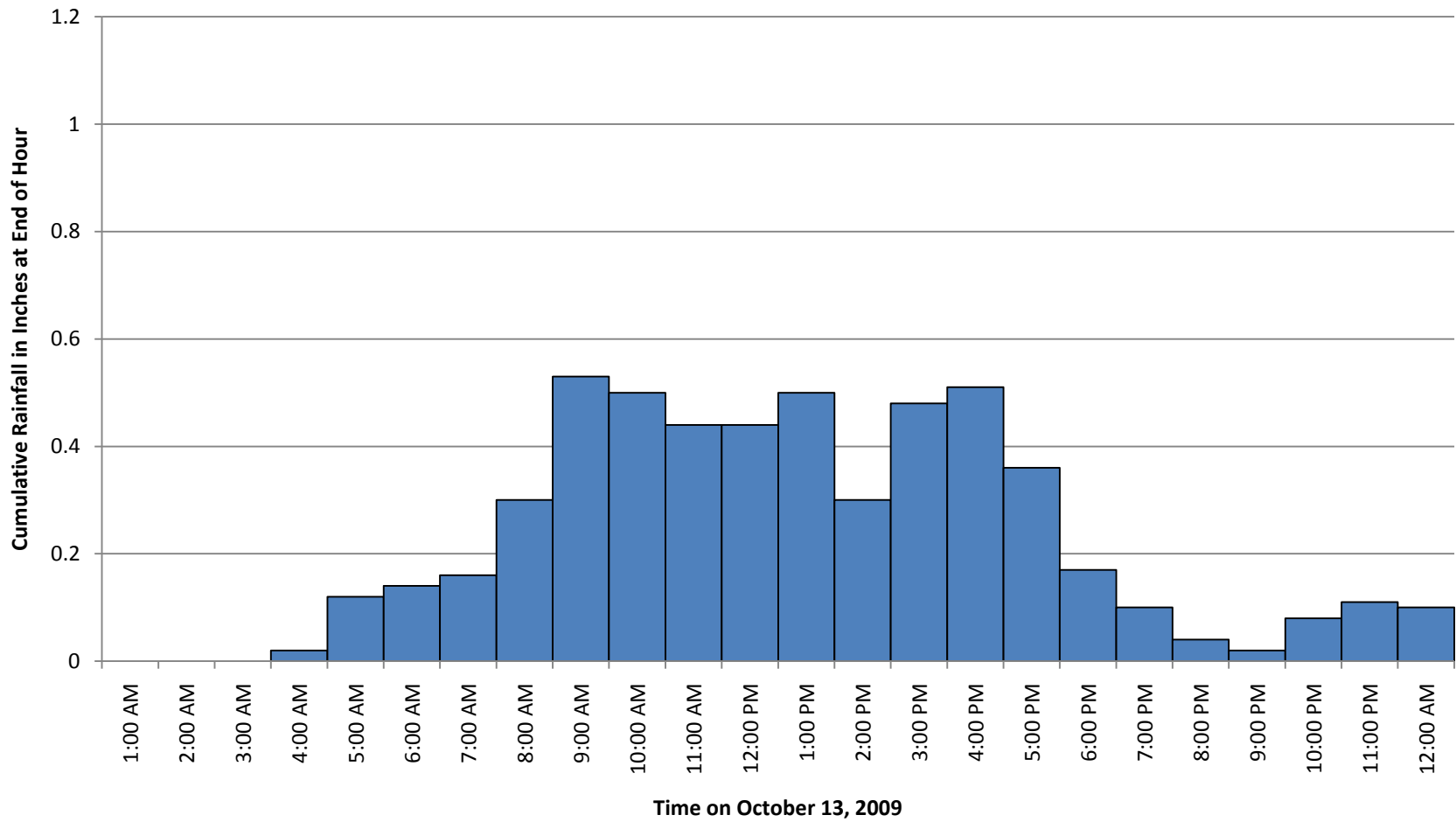
20 DUBLIN FIRE - Oct 13, 2009



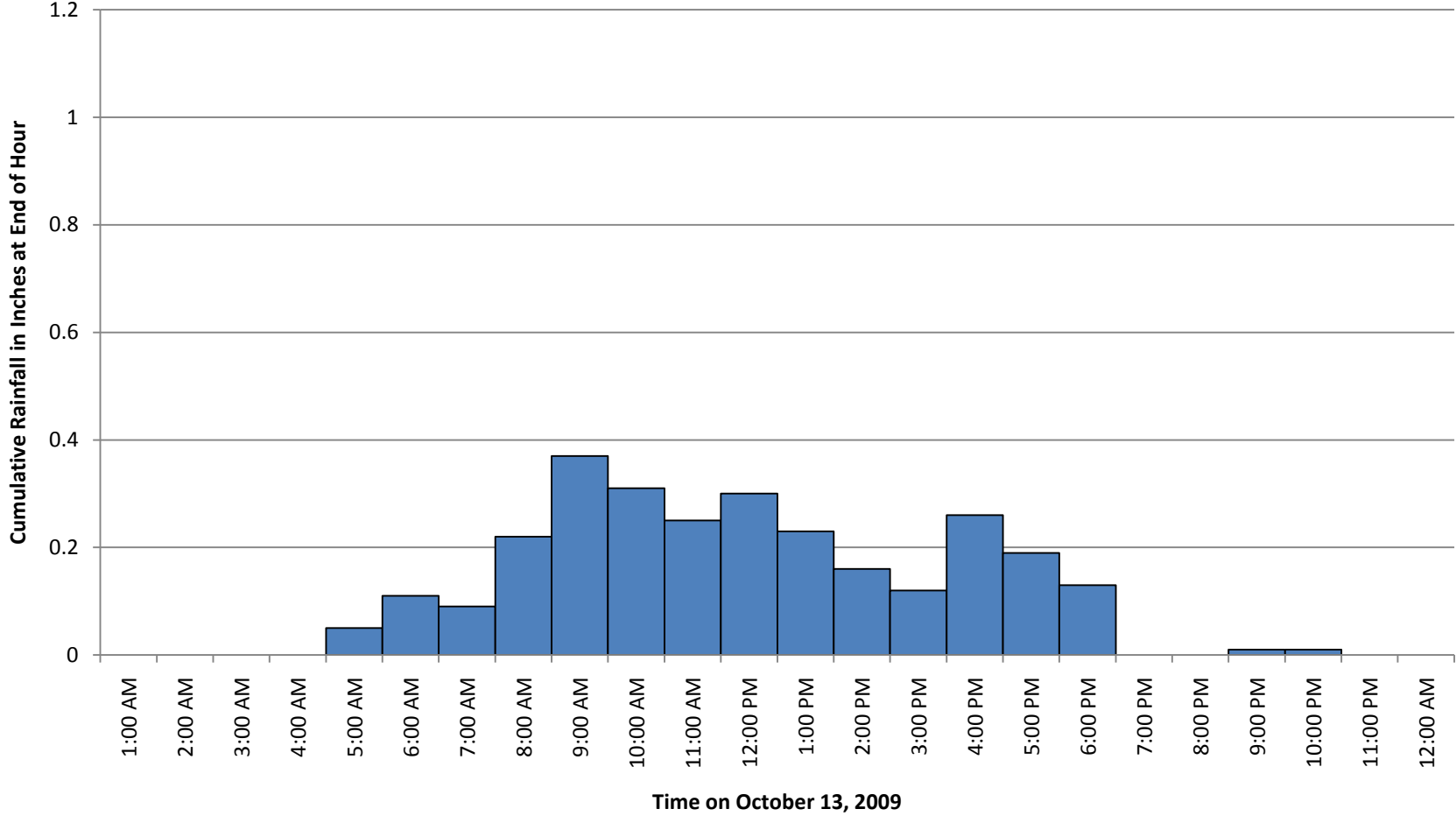
21 RICHMOND CITY HALL - Oct 13, 2009



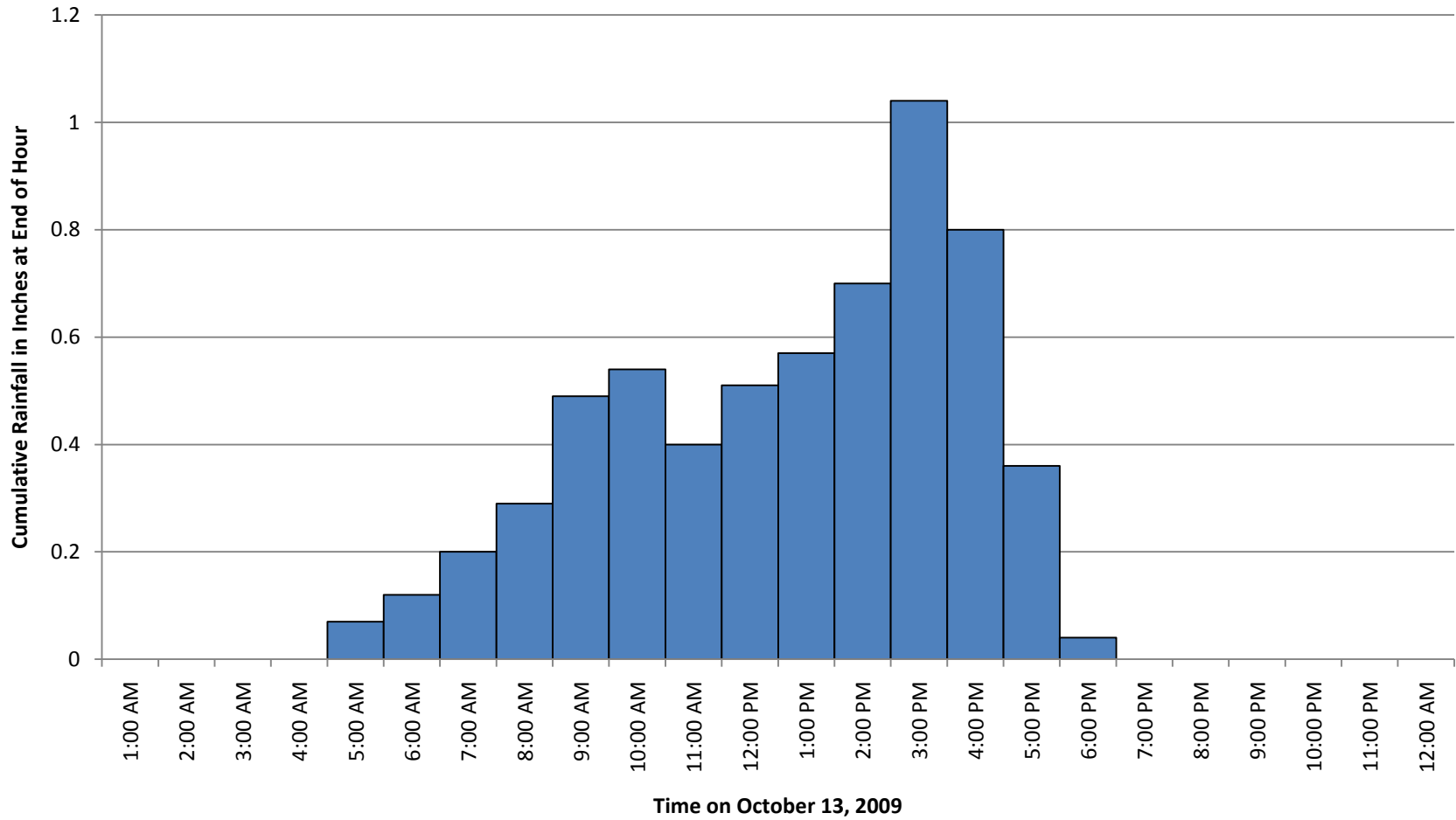
22 MT. DIABLO PEAK - Oct 13, 2009



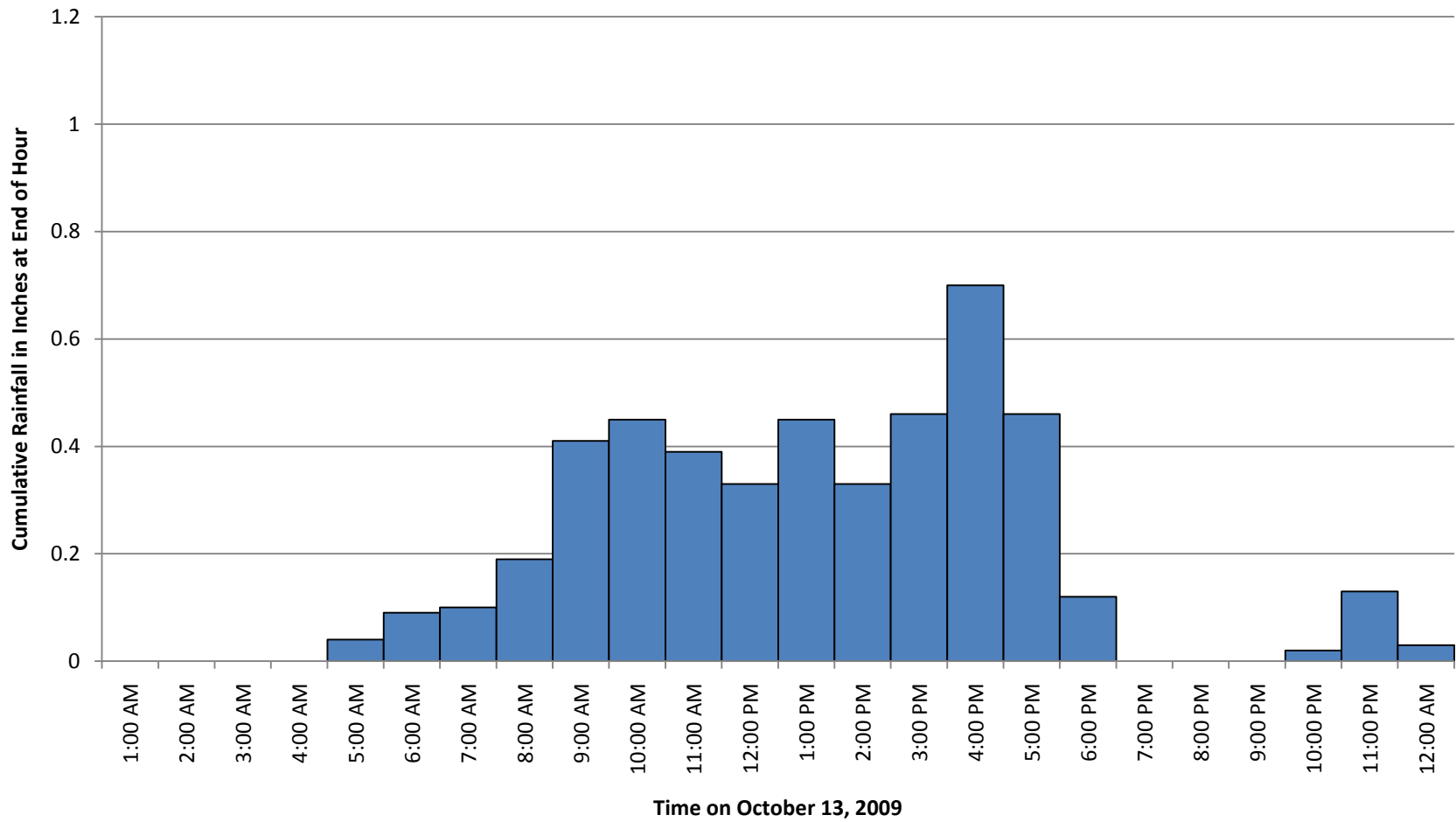
25 MARSH CR. RES. - Oct 13, 2009



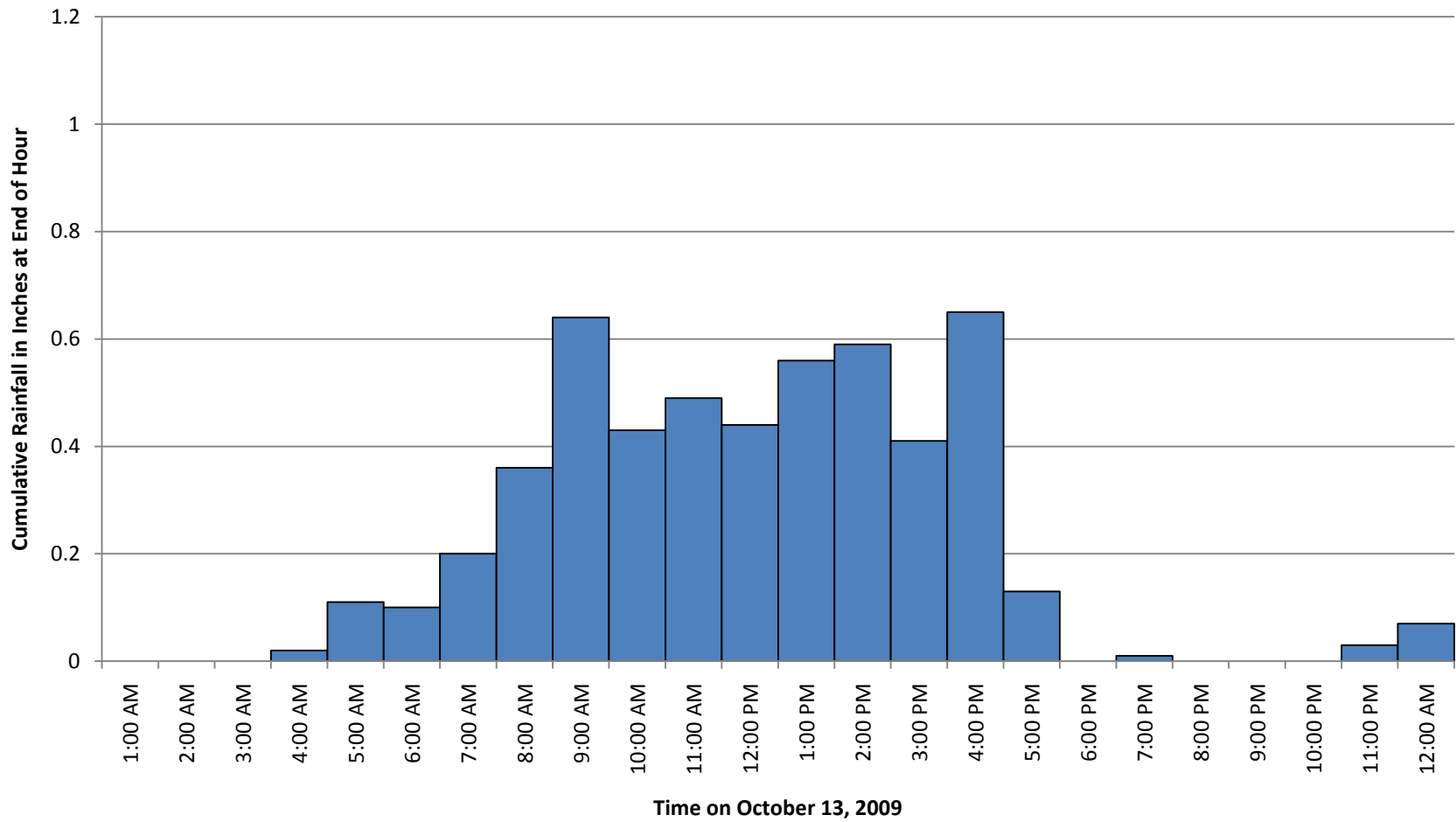
29 ROSSMOOR - Oct 13, 2009



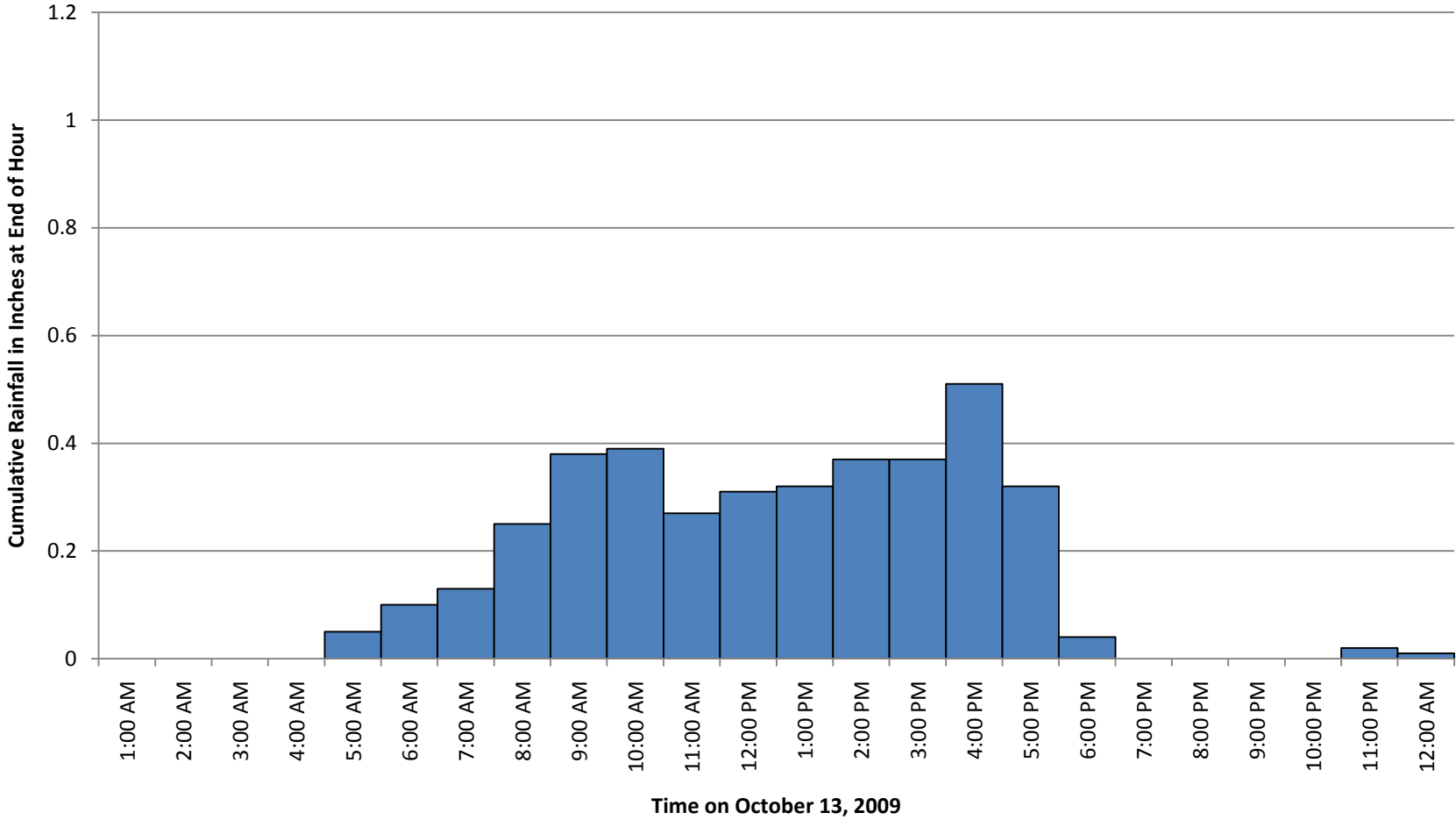
31 DANVILLE LIBRARY - Oct 13, 2009



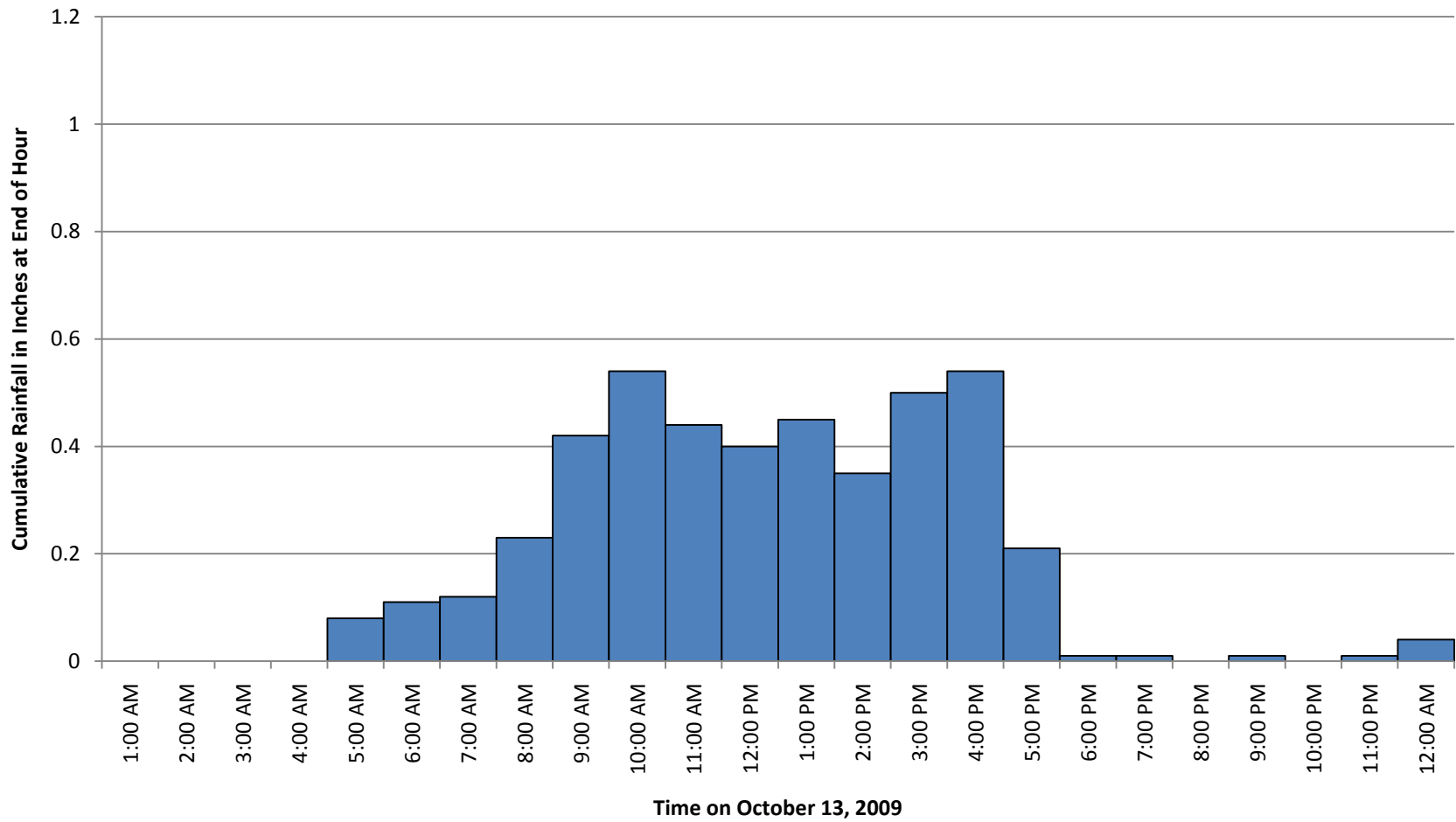
32 BALD PEAK - Oct 13, 2009



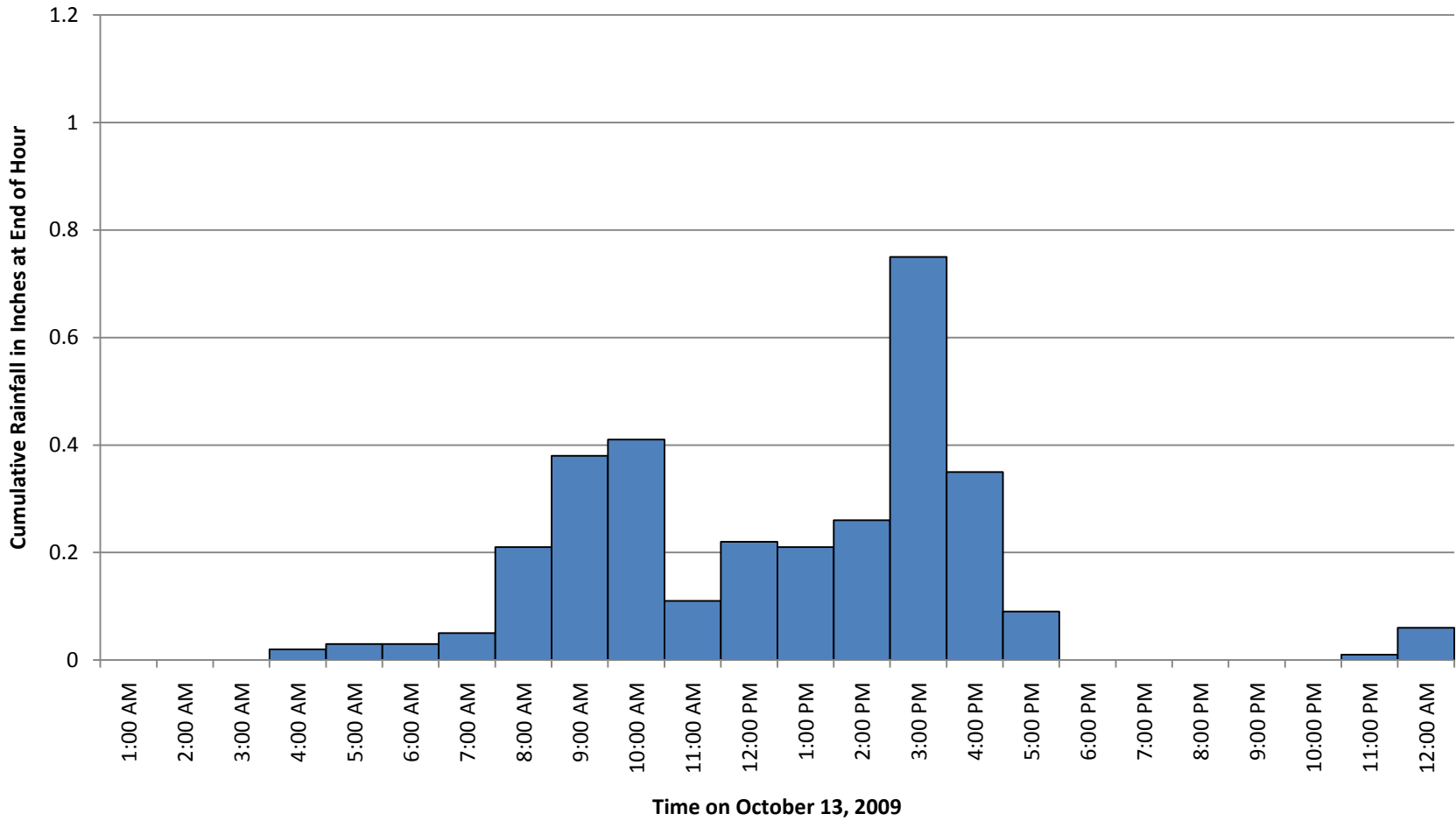
33 YGNACIO FIRE - Oct 13, 2009



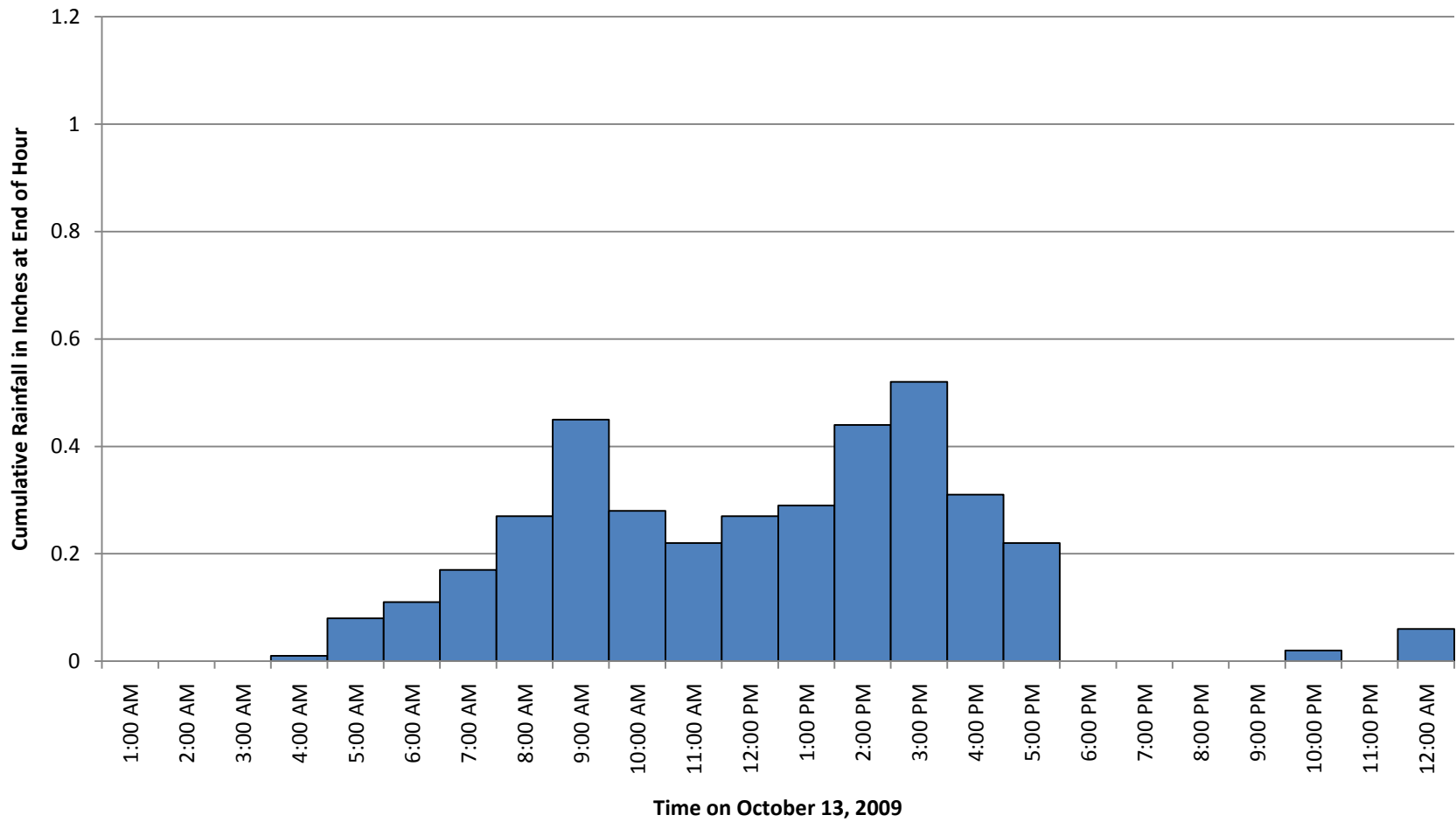
34 ROCKY RIDGE - Oct 13, 2009



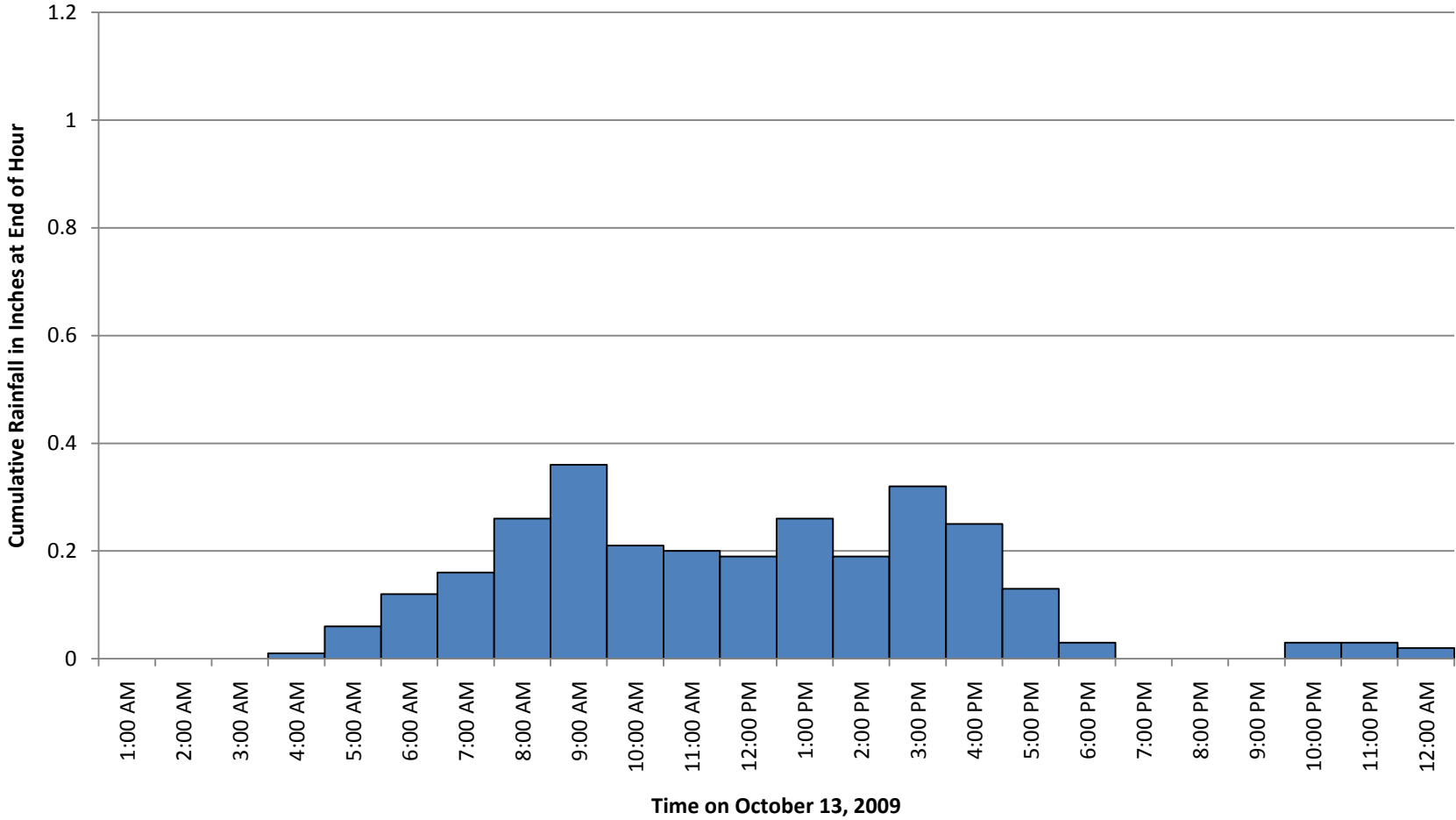
35 CUMMINGS PEAK - Oct 13, 2009



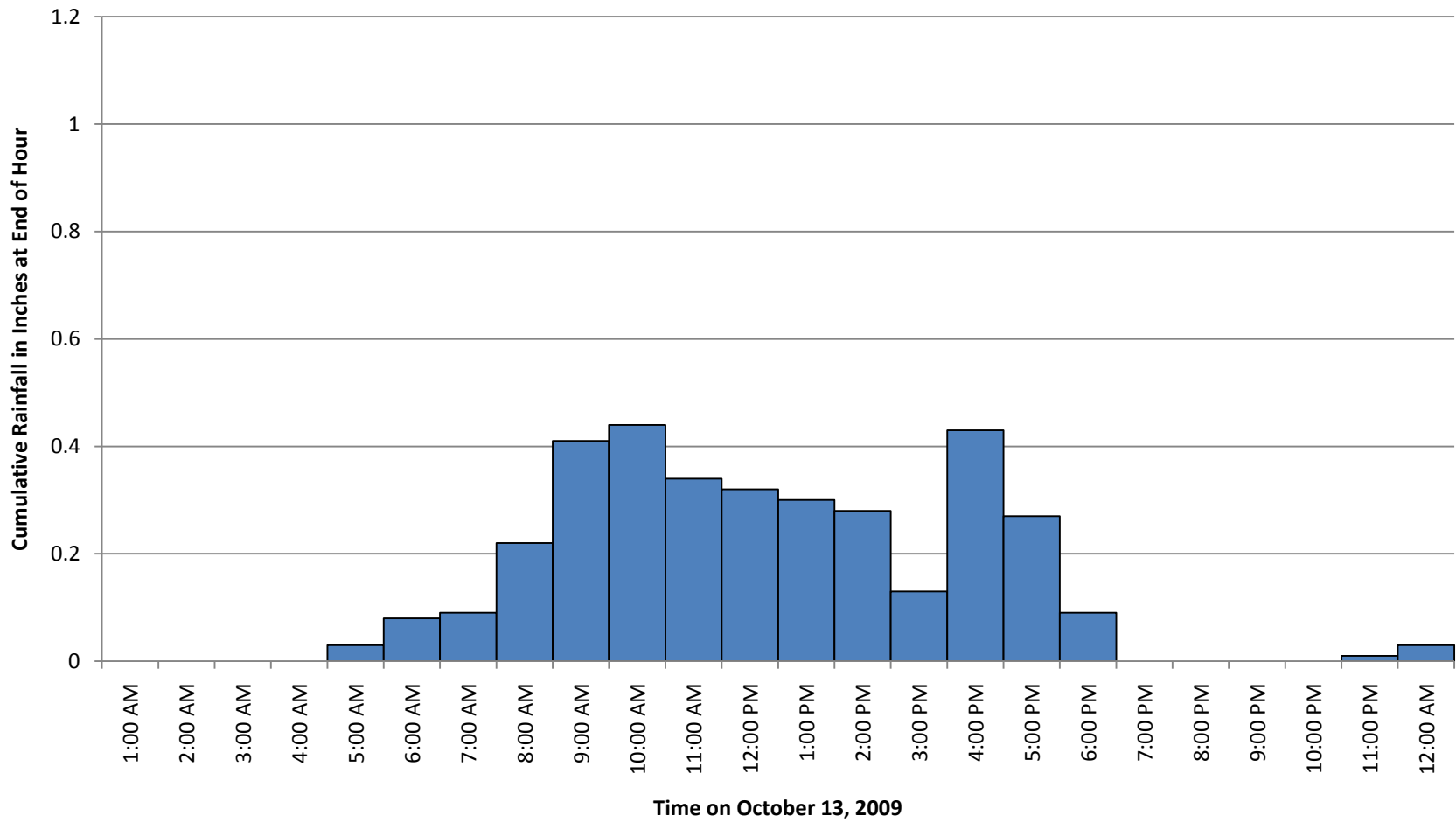
37 ARROYO DEL HAMBRE - Oct 13, 2009



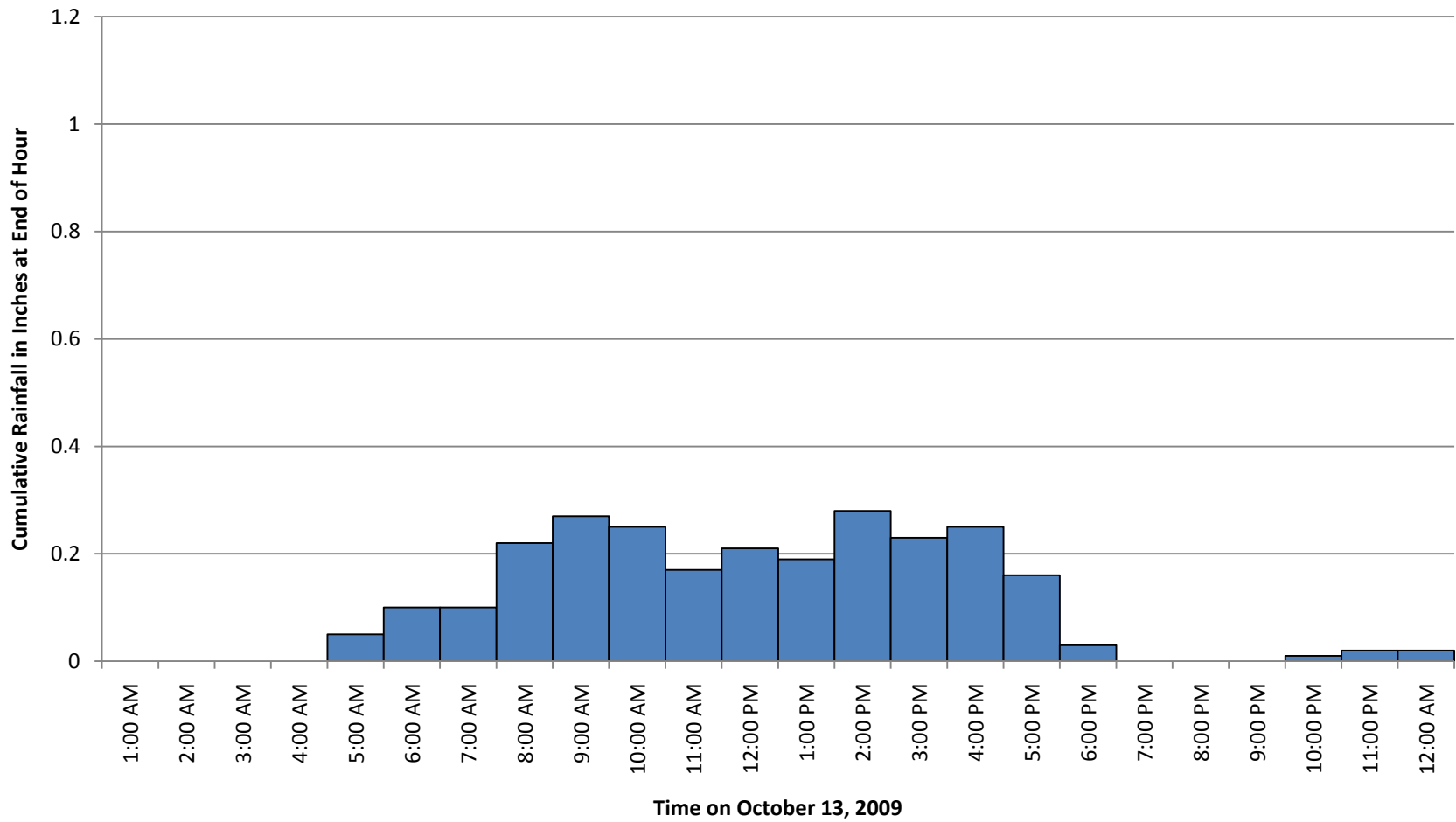
38 KREGOR PEAK - Oct 13, 2009



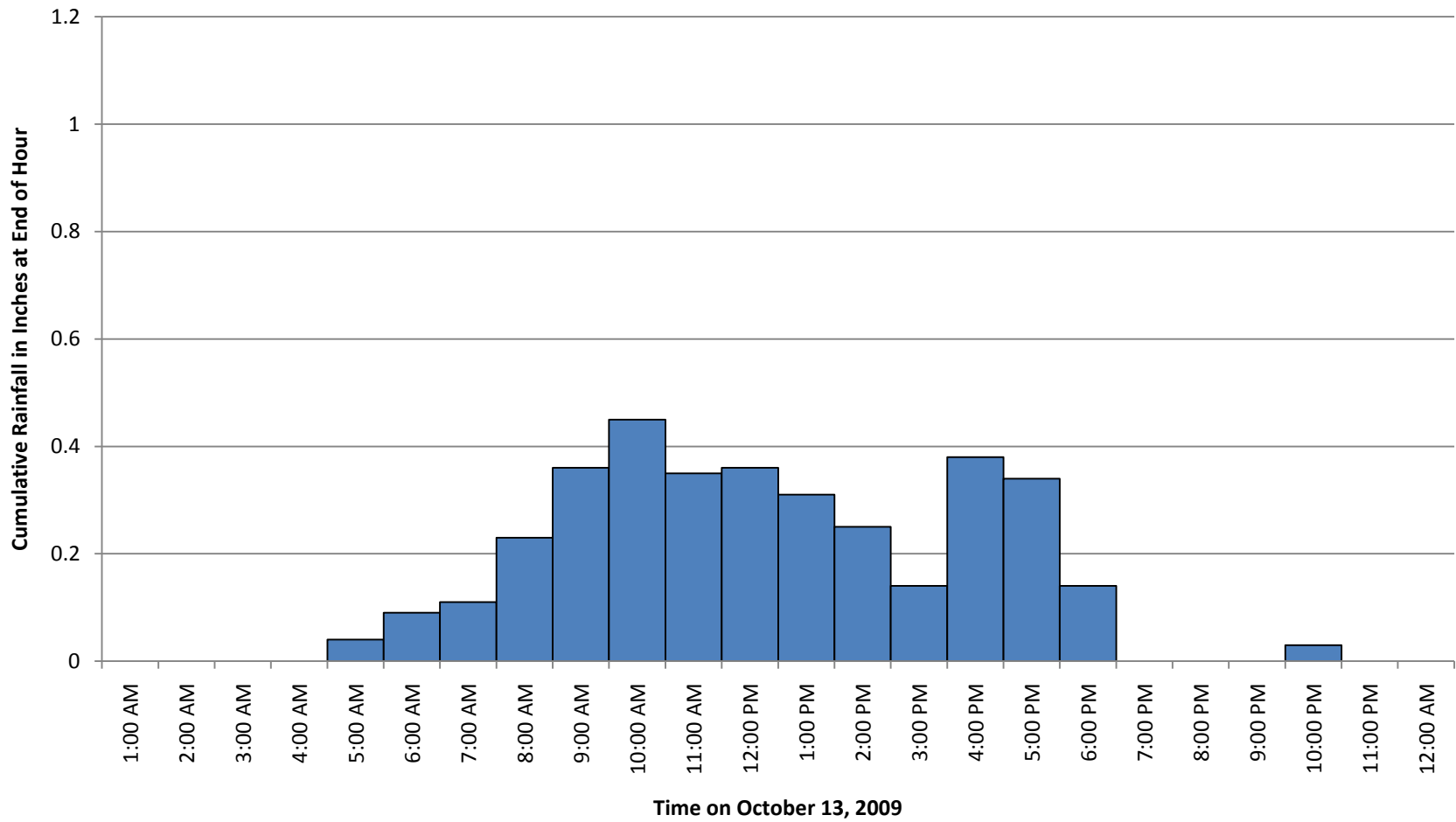
39 IRONHOUSE SAN DIST - Oct 13, 2009



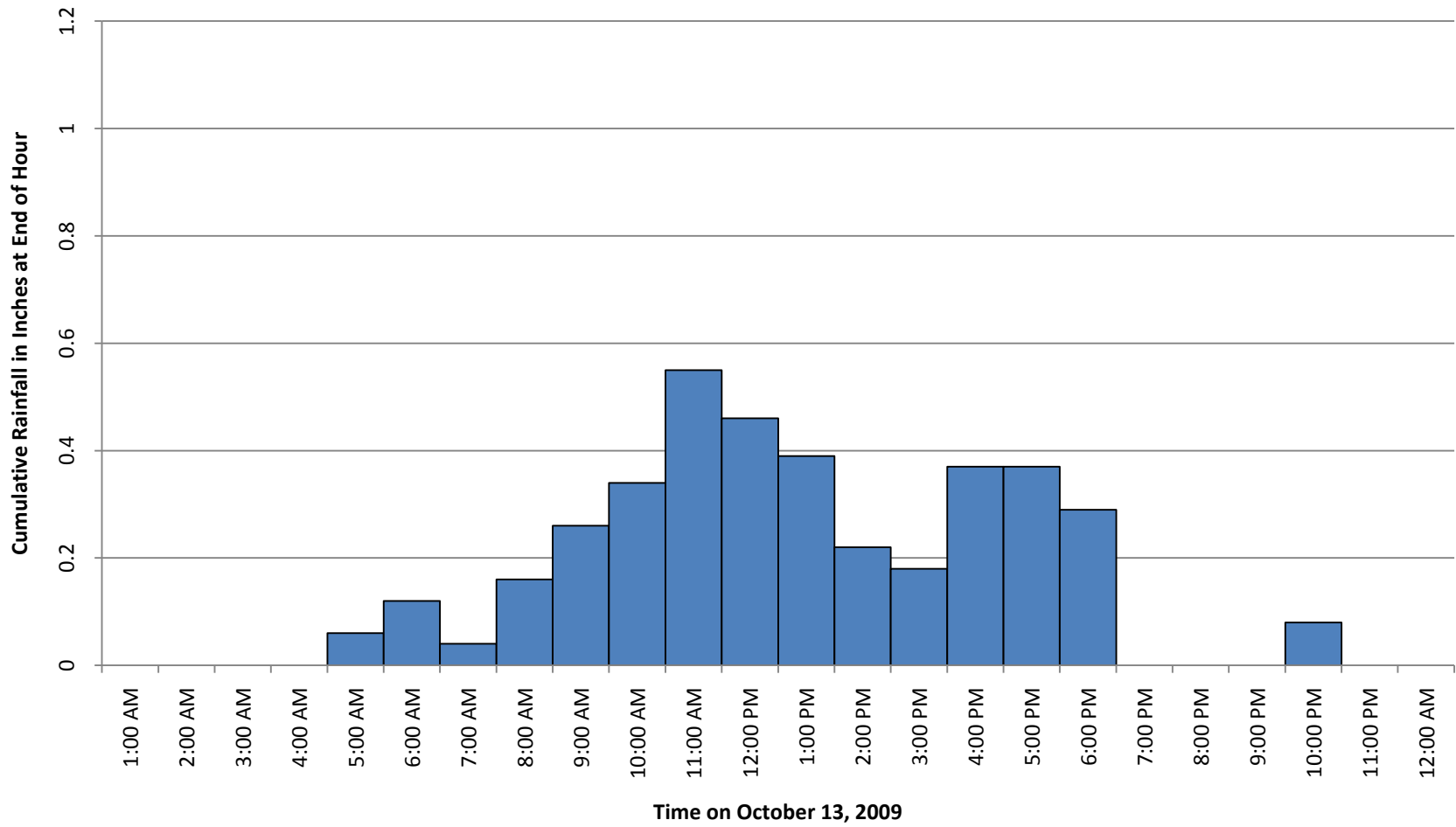
43 CONCORD PAVILION - Oct 13, 2009



44 BETHEL ISLAND FIRE - Oct 13, 2009



45 BYRON AIRPORT - Oct 13, 2009



86 BRENTWOOD CORP YARD - Oct 13, 2009

