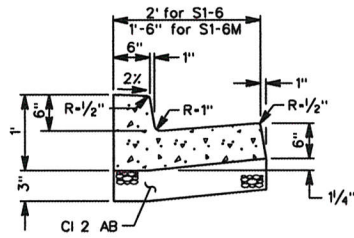
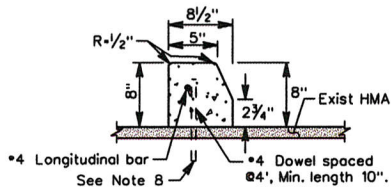


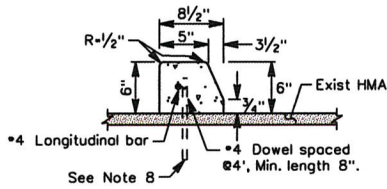
TYPE S1-8 & S1-8M



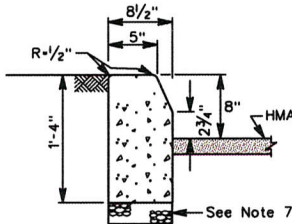
TYPE S1-6 & S1-6M



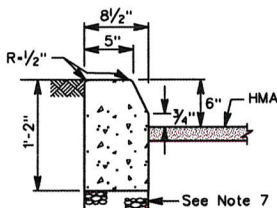
TYPE M3-8 CURB



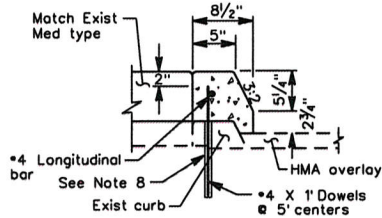
TYPE M3-6 CURB



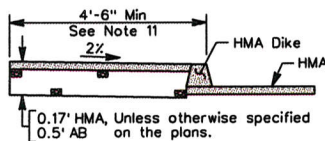
TYPE M1-8 CURB



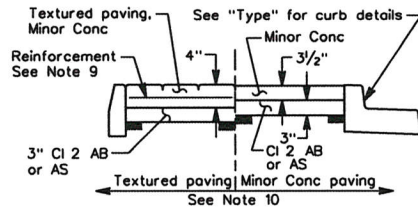
TYPE M1-6 CURB



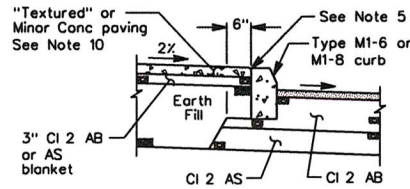
MODIFIED TYPE M3-8 CURB



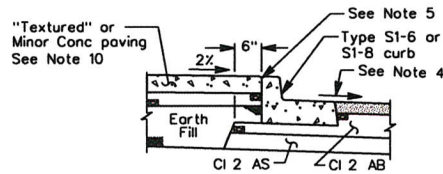
HMA PATH WITH HMA DIKE



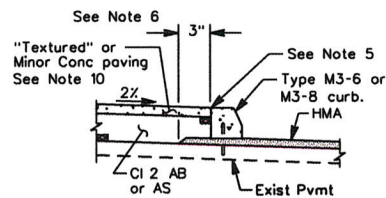
TYPICAL MEDIAN PAVING DETAIL



TYPE A TRAFFIC MEDIAN
Half Section



TYPE B TRAFFIC MEDIAN
Half Section



TYPE C TRAFFIC MEDIAN
Half Section

Julia R. Bueren
PUBLIC WORKS DIRECTOR
 March 11, 2014
 PLANS APPROVAL DATE

REGISTERED PROFESSIONAL ENGINEER
 JULIA R. BUEREN
 No. 37937
 CIVIL
 STATE OF CALIFORNIA

The County of Contra Costa or its officers or agents shall not be responsible for the accuracy or completeness of electronic copies of this plan sheet.

NOTES:

1. Minor Concrete in conformance with Section 90-2. "Minor Concrete" of the California Department of Transportation's Standard Specifications containing no less than 505 lb. per cubic yard of cementitious material shall be used for all concrete construction detailed on this plan.
2. Weakened plane joints shall be provided at 10' intervals on all curbs. See Standard Plan CA70, "Detail B".
3. All new curb where it conforms to existing facilities shall be doweled as per Standard Plan CA74.
4. When the street slopes away from the curb, the gutter slope shall match the cross slope of the street. Paving at the gutter lip shall conform to Standard Plan CA70 Detail A, except that where the street slopes away from the curb, the paving shall match the gutter lip.
5. Curb may be constructed monolithically with the median paving, in which case a weakened plane joint conforming to Standard Plan CA70 Detail B shall be provided along the back of the curb.
6. Type M3 curb shall be used only when placed on existing or overlaid pavement.
7. A 3" minimum compacted layer of Class 2 aggregate base or subbase shall be placed under Type M1 curb, unless noted otherwise on the plans.
8. Place dowels in 1" diameter drilled hole filled with 1:1 sand grout. Omit dowels when curb is extruded.
9. Reinforcement shall be #4 bars at 18" OC each way or 6" x 6", 8" x 8", 10 gage welded wire fabric.
10. Median paving may be "textured" as approved by the Public Works Department.
11. Width of HMA path shall be a minimum of 4'-6" measured from top face of curb or dike.

COUNTY OF CONTRA COSTA
 PUBLIC WORKS DEPARTMENT
 MARTINEZ, CALIFORNIA

**MEDIAN, CURB AND HMA DIKE
 DETAILS**

SCALE: NO SCALE DATE: 3/14
 DRAWN BY: H. HUSSEY PLAN NO. CA71
 CHECKED BY: M. HOLLINGSWORTH

NO.	DATE	REVISION DESCRIPTION	BY