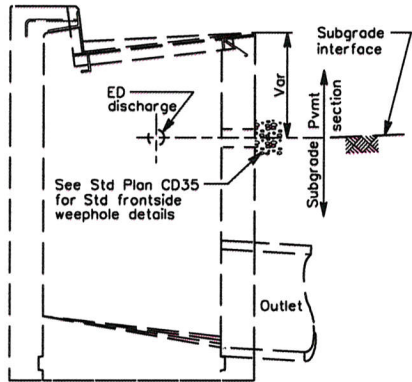
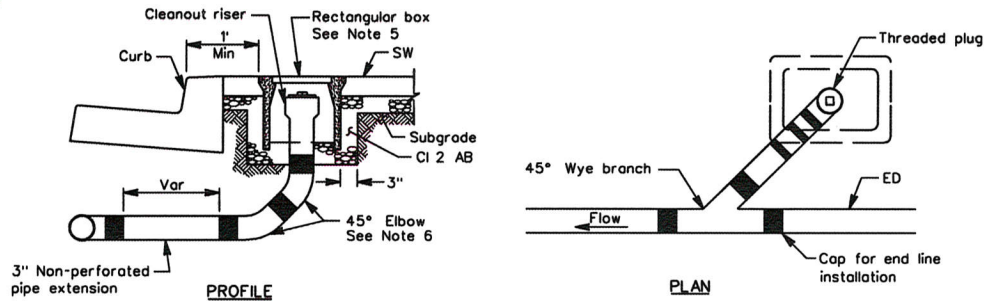


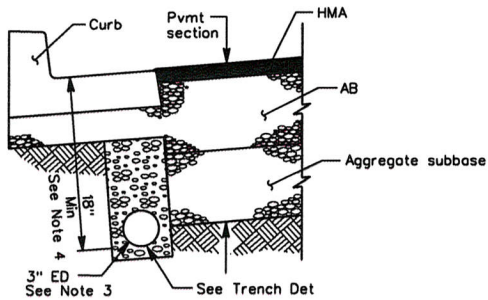
EDGE DRAIN SECTION VIEW



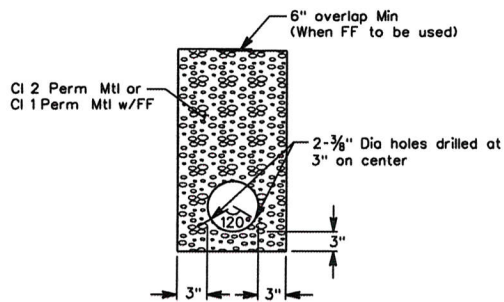
SECTION A-A



IN-LINE CLEANOUT



SECTION B-B



EDGE DRAIN TRENCH DETAIL

*Julia R. Bueren*  
 PUBLIC WORKS DIRECTOR  
 March 14, 2014  
 PLANS APPROVAL DATE

REGISTERED PROFESSIONAL ENGINEER  
 JULIA R. BUEREN  
 No. 37937  
 CIVIL  
 STATE OF CALIFORNIA

*The County of Contra Costa or its officers or agents shall not be responsible for the accuracy or completeness of electronic copies of this plan sheet.*

NOTES:

- Edge drains shall be installed to the lengths (L) as directed by the Public Works Department or as shown on project construction plans.
- Place cap at end when dimension "L" is less than 250'. For "L" greater than 250', place cleanout every 250' and a cleanout at end of edge drain.
- Edge drain pipe shall conform to Section 68, "Subsurface Drains," of California Department of Transportation Standard Specifications, or as approved by the Public Works Department.
- Edge drain elevation varies depending on depth of the adjoining pavement section. It shall be at, or slightly below, the pavement section subgrade elevation with a minimum depth of 18" below curb flowline and a minimum slope of 0.3%.
- Rectangular box (10 5/8" x 17 1/2") shall be Christy, Model B9 or equivalent. See Standard Plan CU60 for box clearances.
- No single elbow shall be installed with a bend greater than 45 degrees.
- Alternate Designs: Other proprietary subdrain products such as "Multi-flow Drainage Systems" may be allowed by the Public Works Department on a case-by-case basis. These alternate edge drain systems must be placed at the same depths as shown on this plan with access points for flushing located outside road pavement no less than every 250 feet.

STD. PLAN CD08

COUNTY OF CONTRA COSTA  
 PUBLIC WORKS DEPARTMENT  
 MARTINEZ, CALIFORNIA  
 STANDARD PLAN

EDGE DRAIN DETAILS

NO.	DATE	REVISION DESCRIPTION	BY

SCALE: NO SCALE      DATE: 3/14  
 DRAWN BY: H. HUSSEY      PLAN NO. CD08  
 CHECKED BY: M. HOLLINGSWORTH