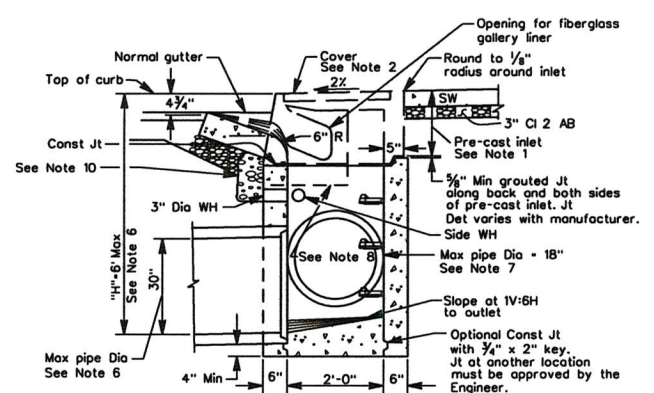
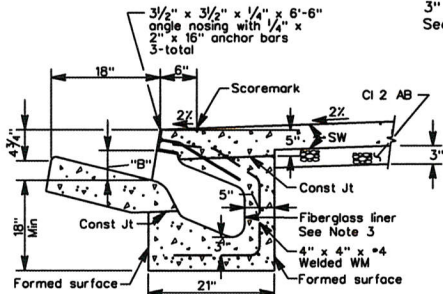
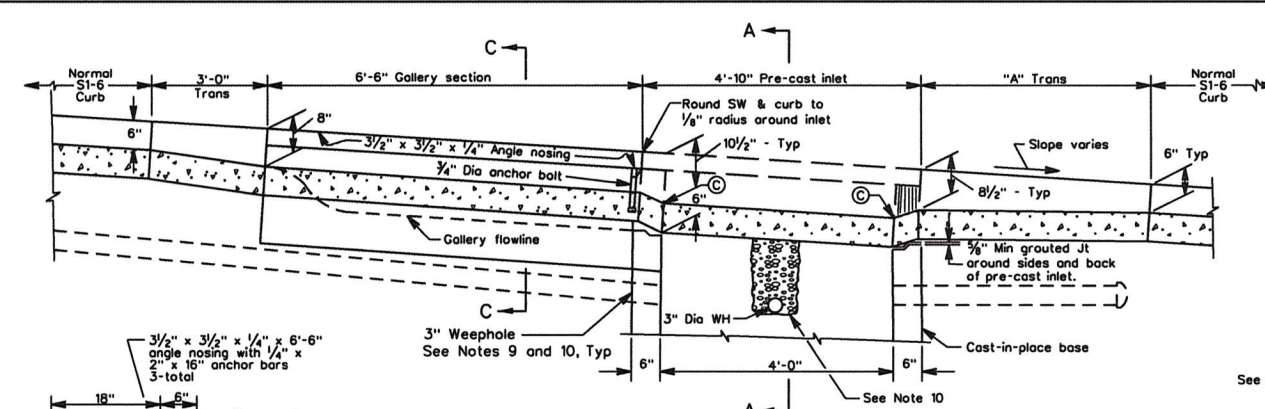


Julia R. Bueren
 PUBLIC WORKS DIRECTOR
 March 11, 2014
 PLANS APPROVAL DATE

REGISTERED PROFESSIONAL ENGINEER
 JULIA R. BUEREN
 No. 37937
 CIVIL
 STATE OF CALIFORNIA

The County of Contra Costa or its officers or agents shall not be responsible for the accuracy or completeness of electronic copies of this plan sheet.



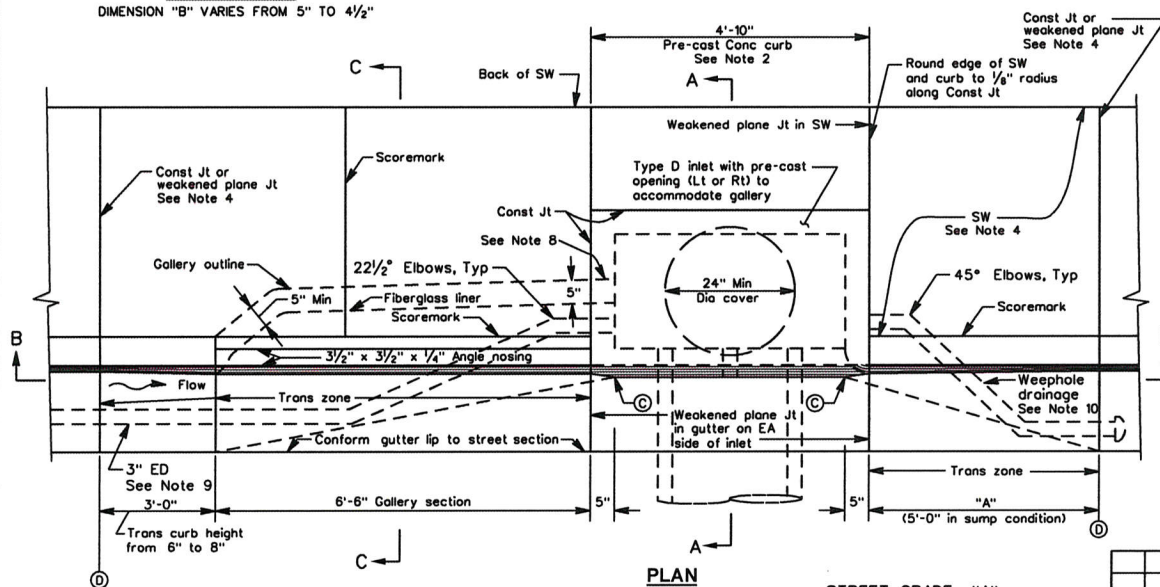
SECTION B-B

SECTION C-C
 DIMENSION "B" VARIES FROM 5" TO 4 1/2"

SECTION A-A

NOTES:

1. For Inlet General Notes and Details, see Standard Plan CD35.
2. The pre-cast concrete curb inlet shall be Central Precast Model 4A or Christy Concrete Prod. Model U-37, or equivalent, as approved by the Public Works Department. See manufacturer's catalog for details of inlet and circular cover not shown on this plan. Covers shall have a hole for access.
3. Fiberglass liner for gallery shall be Central Precast Pelican Gallery Model 6Y, or approved equivalent.
4. When curb and sidewalk are extruded, construction joints shall be provided at location (D) as shown in plan view.
5. Curb and gallery section and sidewalk shall be constructed monolithically.
6. If "H" exceeds 6'-0", construct pre-cast inlet on a Type II or Type III manhole base as shown in Detail D on Standard Plan CD23, Type D Inlet. See Standard Plans CD31 and CD32 for manhole base and top slab details.
7. A pipe shall not enter the inlet through a corner. If pipe exceeds maximum diameter allowed or the skew angle prevents the pipe opening from being made in a single wall, construct a Type II or III manhole base to accept storm drain pipes.
8. Block out portion of cast-in-place base as required to permit construction of gallery to inside face of base, and fill in when gallery concrete is placed.
9. If edge drains are specified by Public Works Department or shown on the plans, see Standard Plan CD08 for edge drain (ED) details.
10. See Standard Plan CD35 for weephole drainage details unless edge drain is shown on plans or as specified by Public Works Department. For edge drain details, see Standard Plan CD08.



PLAN

STREET GRADE "A"
 1/2" to 3/2" 4'-0"
 3/2" to 6" 2'-0"
 Sump 5'-0"

NO.	DATE	REVISION DESCRIPTION	BY

COUNTY OF CONTRA COSTA
 PUBLIC WORKS DEPARTMENT
 MARTINEZ, CALIFORNIA
 STANDARD PLAN

TYPE "E" INLET

SCALE: NO SCALE DATE: 3/14
 DRAWN BY: H. HUSSEY PLAN NO. **CD24**
 CHECKED BY: M. HOLLINGSWORTH