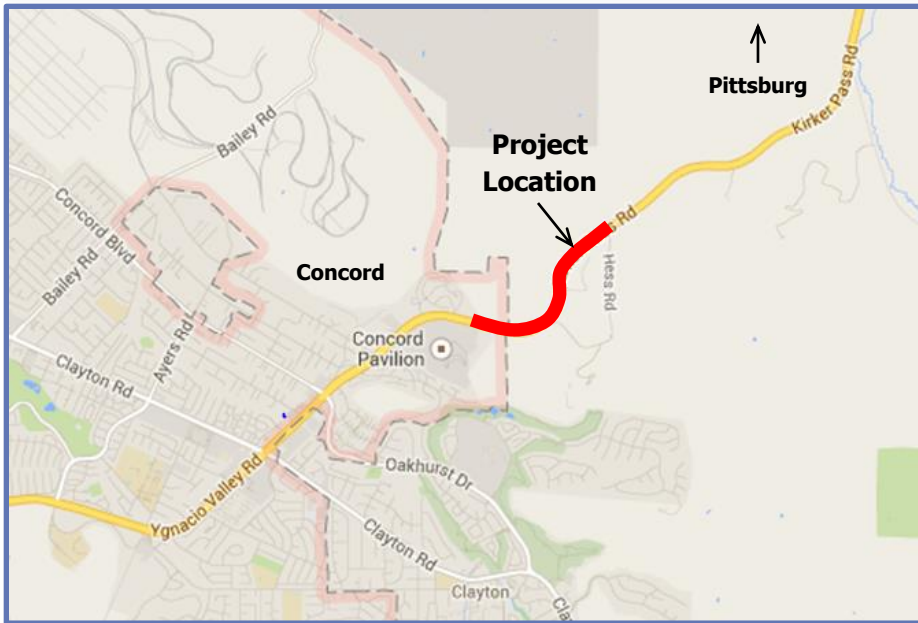


Kirker Pass Road Northbound Truck Lane

Contra Costa County
 County Project No. 0662-6R4052
 Measure J Project #24004



Background

Kirker Pass Road is an interregional route between Central and East Contra Costa County. The roadway is used by commuters and approximately 1,200 trucks each day. The mountainous terrain features a number of sustained grades greater than 8%. With a high volume of passenger cars, the truck traffic along the roadway contributes to significant congestion during peak hours. The addition of truck lanes along the roadway would reduce congestion and improve safety along the roadway.

Project Description

The project will improve safety and reduce congestion along Kirker Pass Road by constructing a truck climbing lane in the northbound direction. The project is approximately 1 mile in length, beginning at the Concord Pavilion and ending at the northern Hess Road intersection. Pavement widening is proposed on the east side of the roadway to provide a 12-foot truck lane and 8-foot paved shoulder. Widening will require significant retaining walls due to the existing slopes and drainage adjacent to the roadway.

Funding Plan (\$ in millions)

Measure J	\$ 6.35
State Transportation Improvement Program – Regional (STIP-RIP)	\$ 2.65
State Match	\$ 1.99
Local Funds	\$ 7.32
Total	\$ 18.31



Kirker Pass Road Northbound Truck Lane

Contra Costa County
County Project No. 0662-6R4052
Measure J Project #24004

Project Features

...

- Pavement Widening
- Earthwork
- Retaining Walls
- Storm Drainage
- Stormwater Treatment
- Signing and Striping
- Utility Relocation

Project Website

...

[http://www.cccounty.us/
KirkerPassRoad](http://www.cccounty.us/KirkerPassRoad)



Project Schedule

Environmental Clearance	Fall 2016
Final Design	Summer 2018
Right of Way Clearance	Fall 2018
Construction	Summer 2019



Project Contact

Nancy Wein, Senior Civil Engineer
(925) 313-2275
nancy.wein@pw.cccounty.us



"Accredited by the American Public Works Association"

255 Glacier Drive Martinez, CA 94553-4825
TEL: (925) 313-2000 • FAX: (925) 313-2333
www.cccpublicworks.org