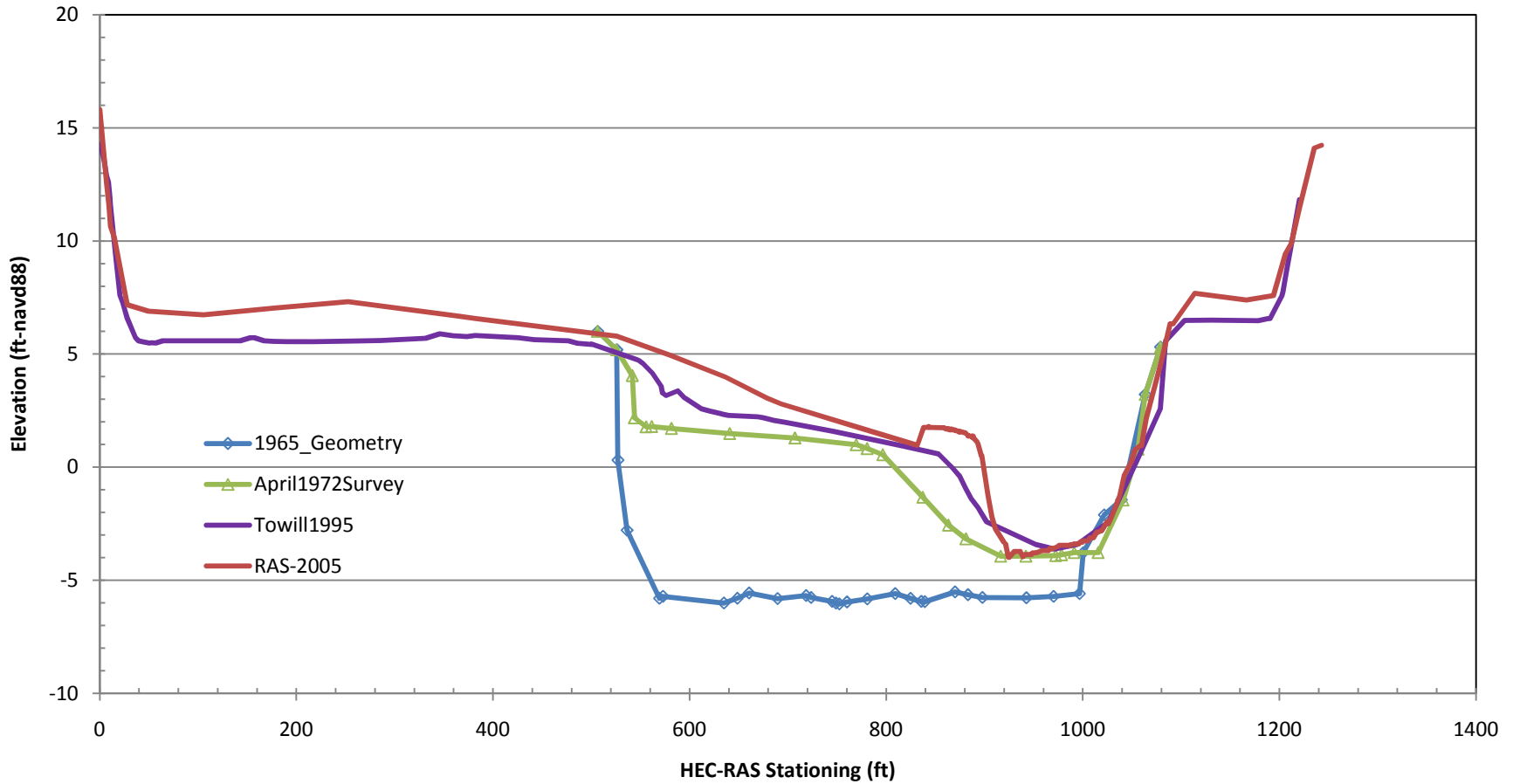
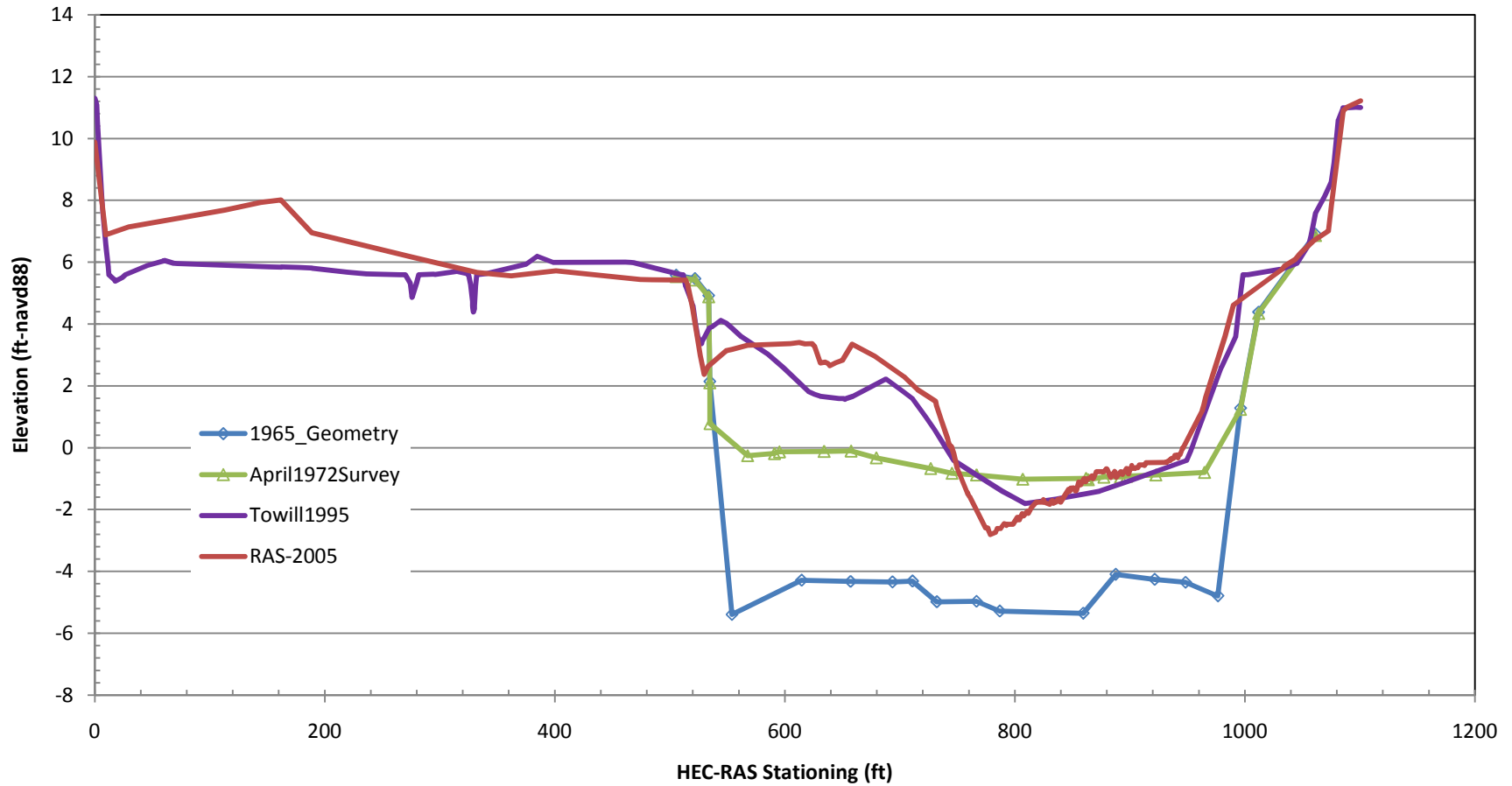


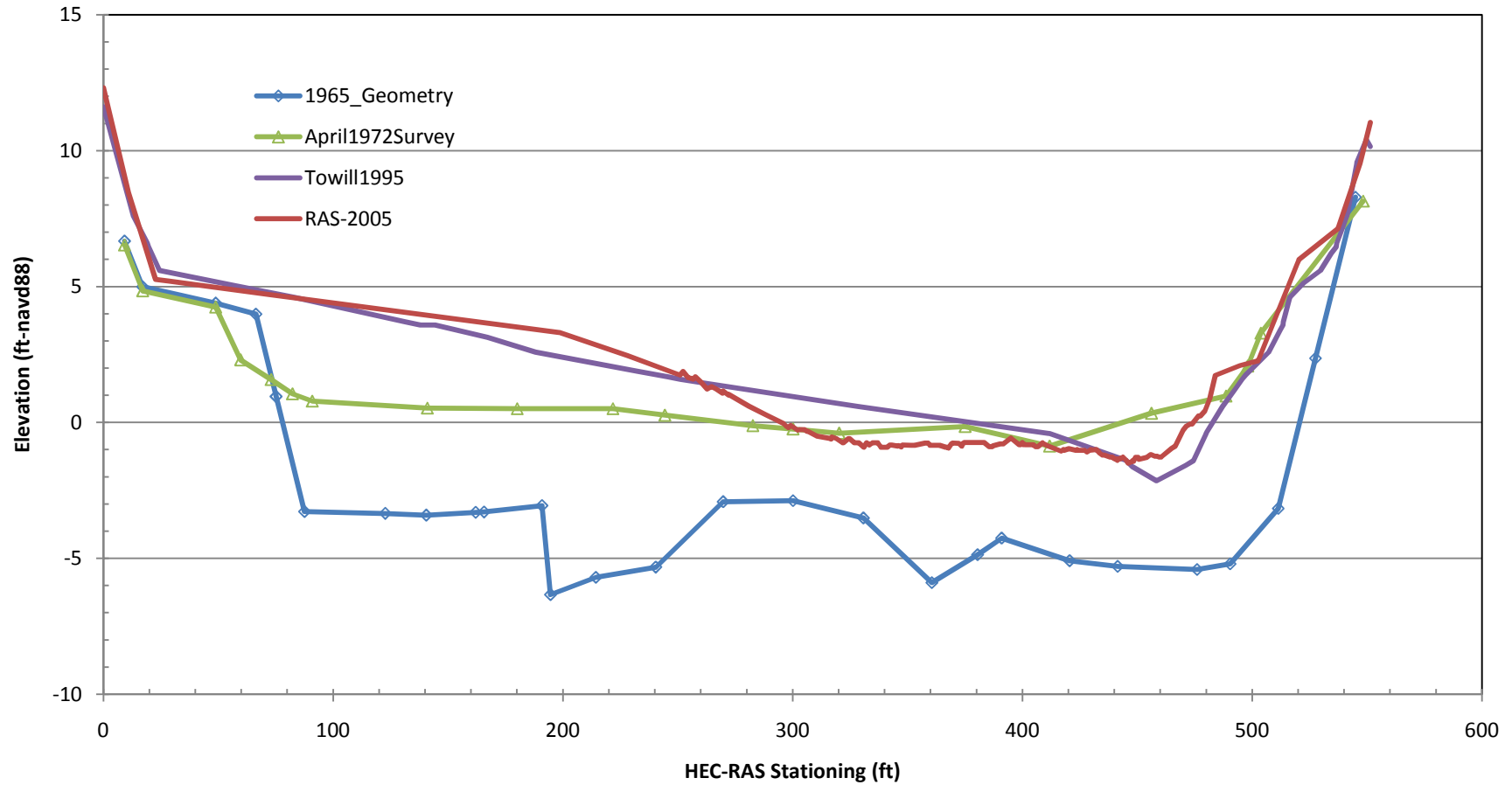
**Sediment Transect 15+00**  
HEC-RAS Sta 16+05.889\HEC-6T Sta 1605



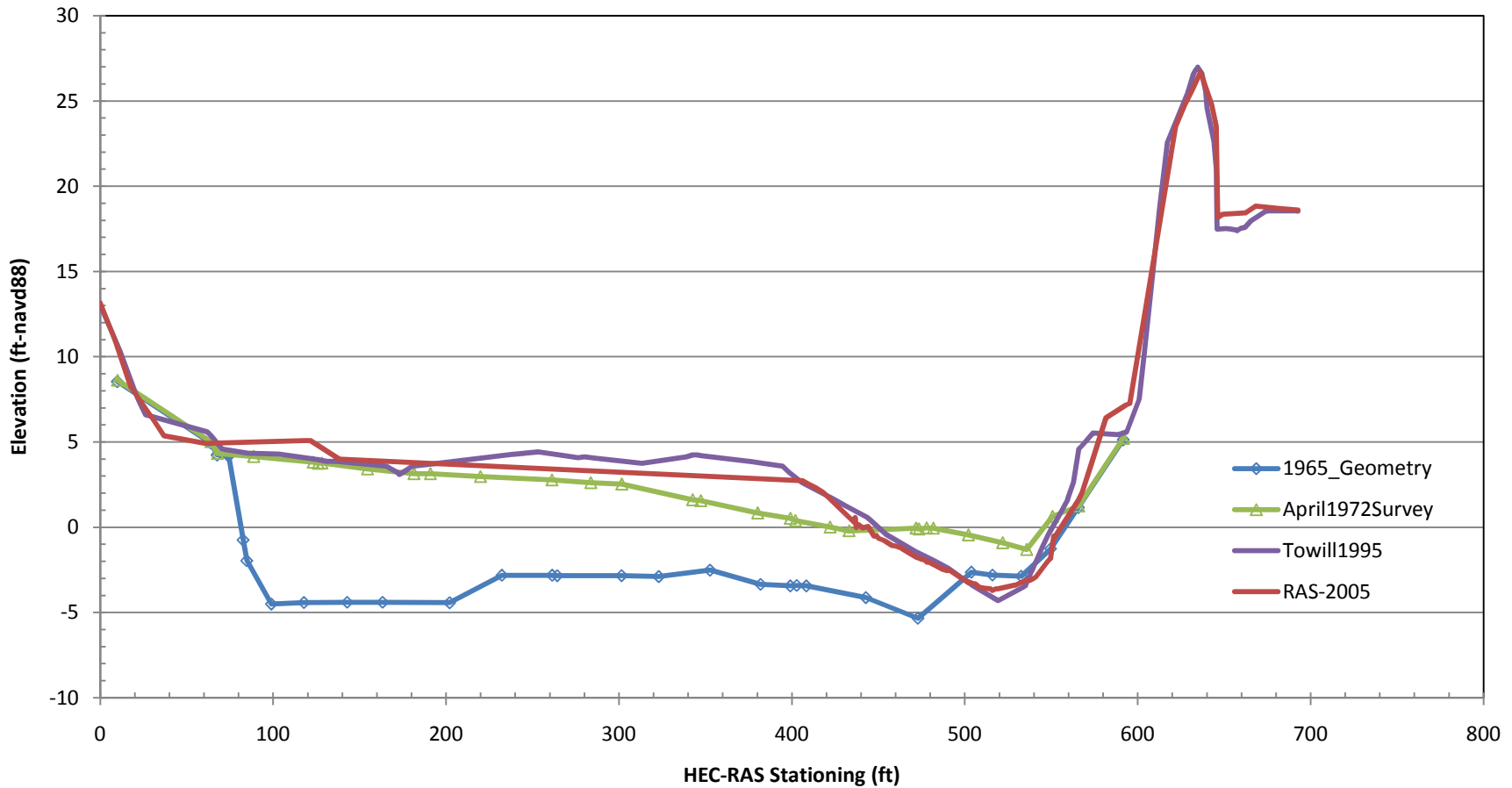
**Sediment Transect 45+00**  
HEC-RAS Sta 45+24.482\HEC-6T Sta 4524



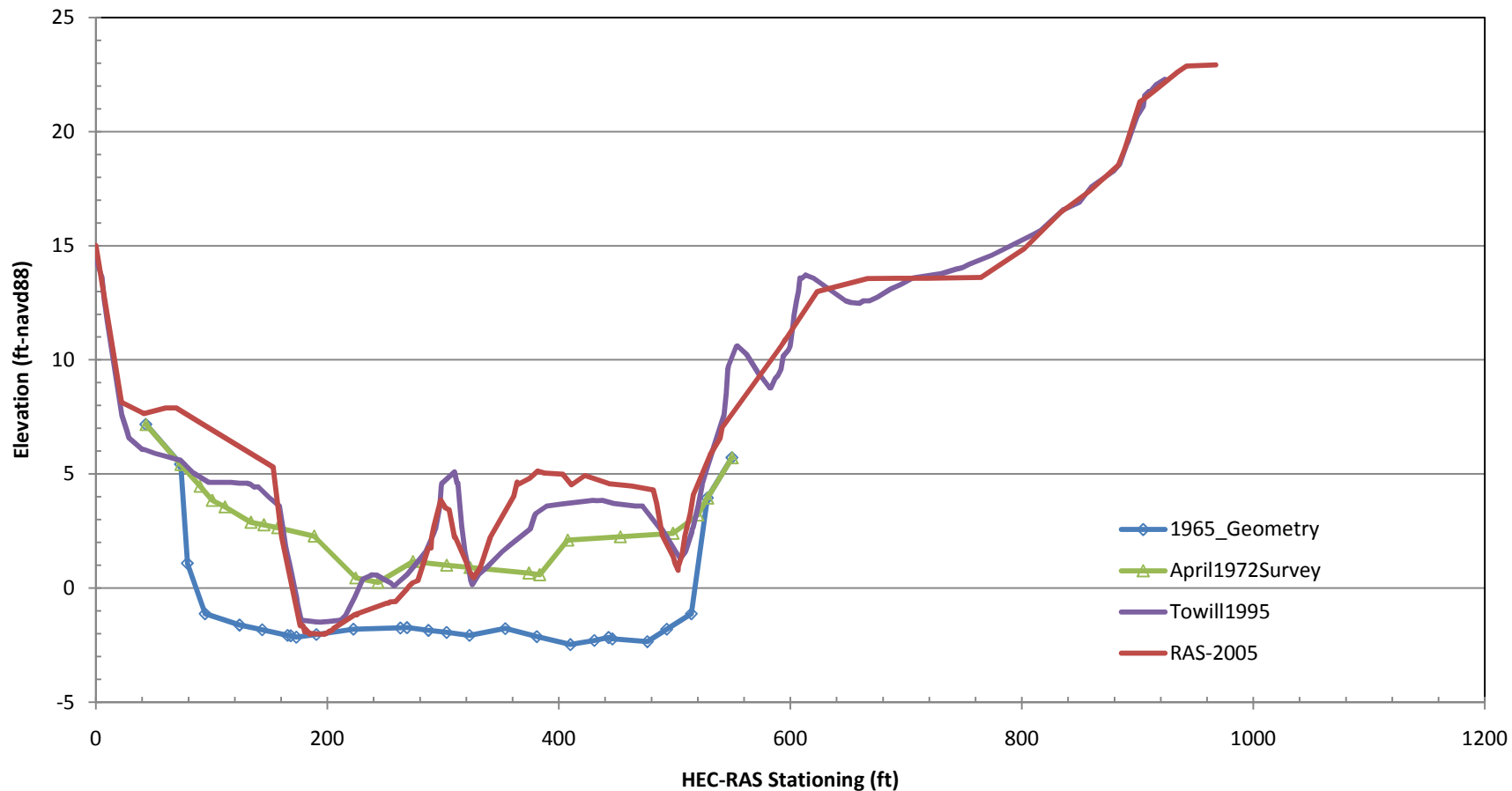
**Sediment Transect 72+00**  
**HEC-RAS Sta 72+58.856\HEC-6T Sta 7259**



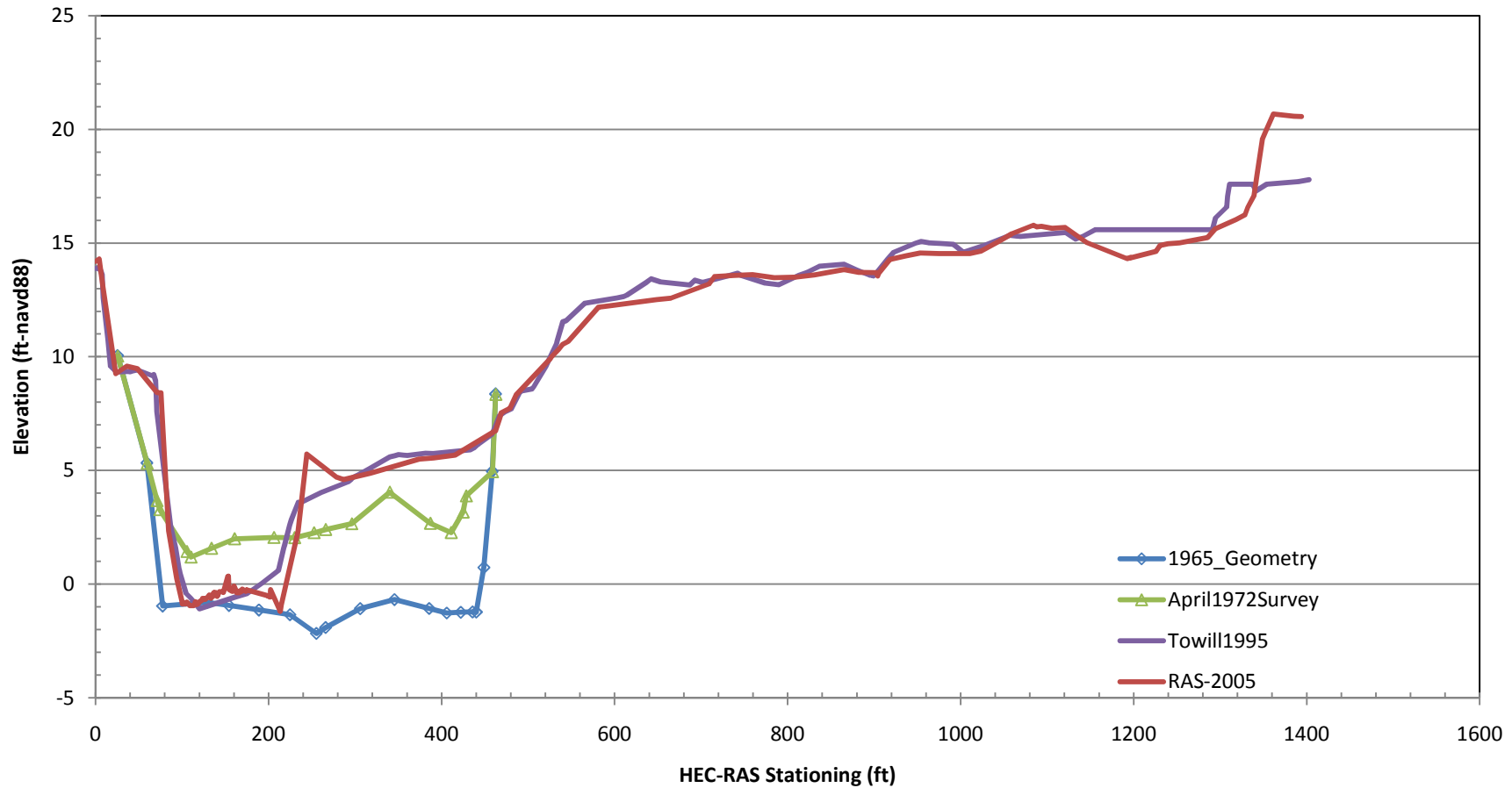
**Sediment Transect 95+00**  
HEC-RAS Sta 94+87.588\HEC-6T Sta None



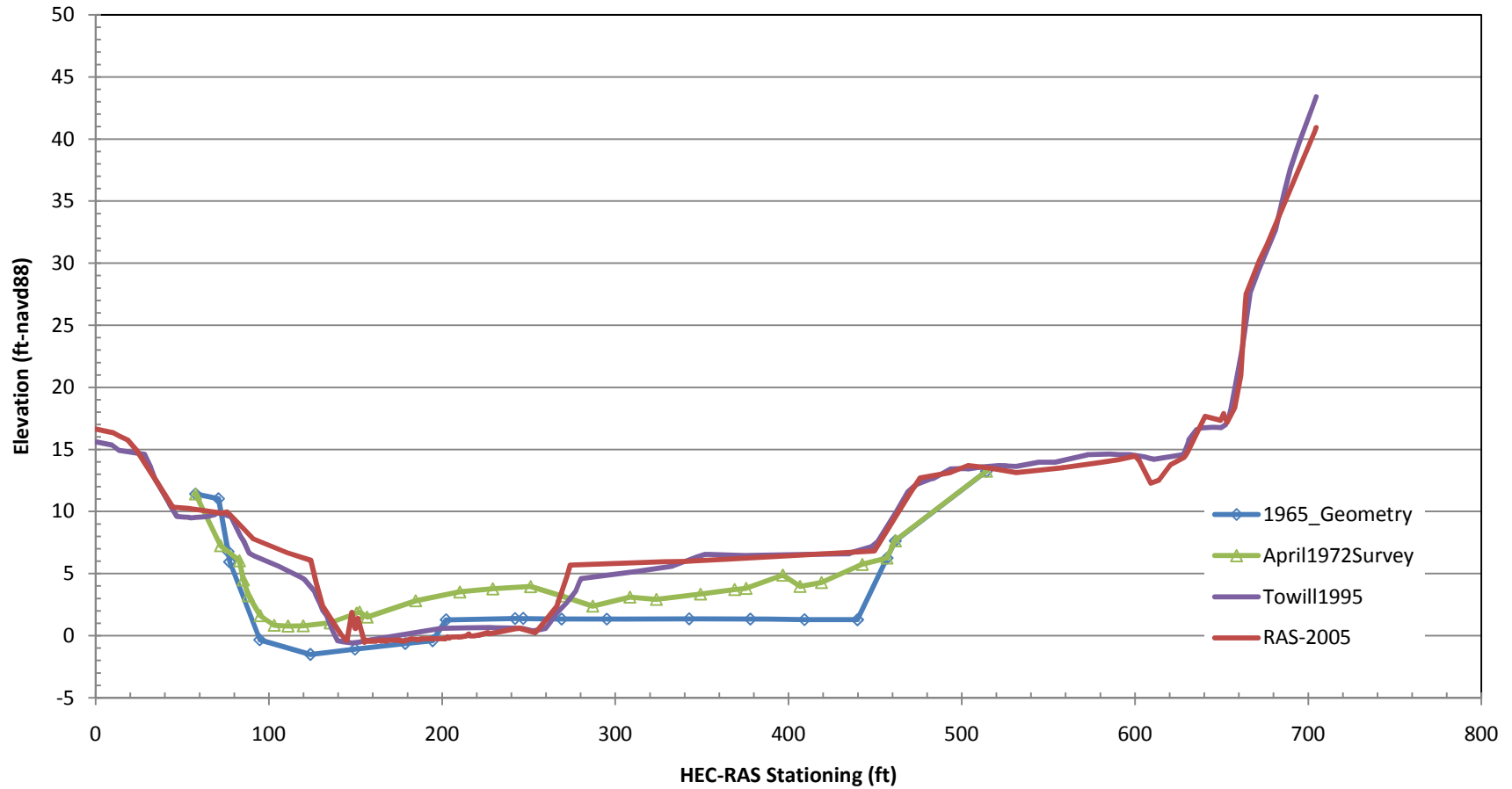
**Sediment Transect 115+08**  
HEC-RAS Sta 114+91.66\HEC-6T Sta None



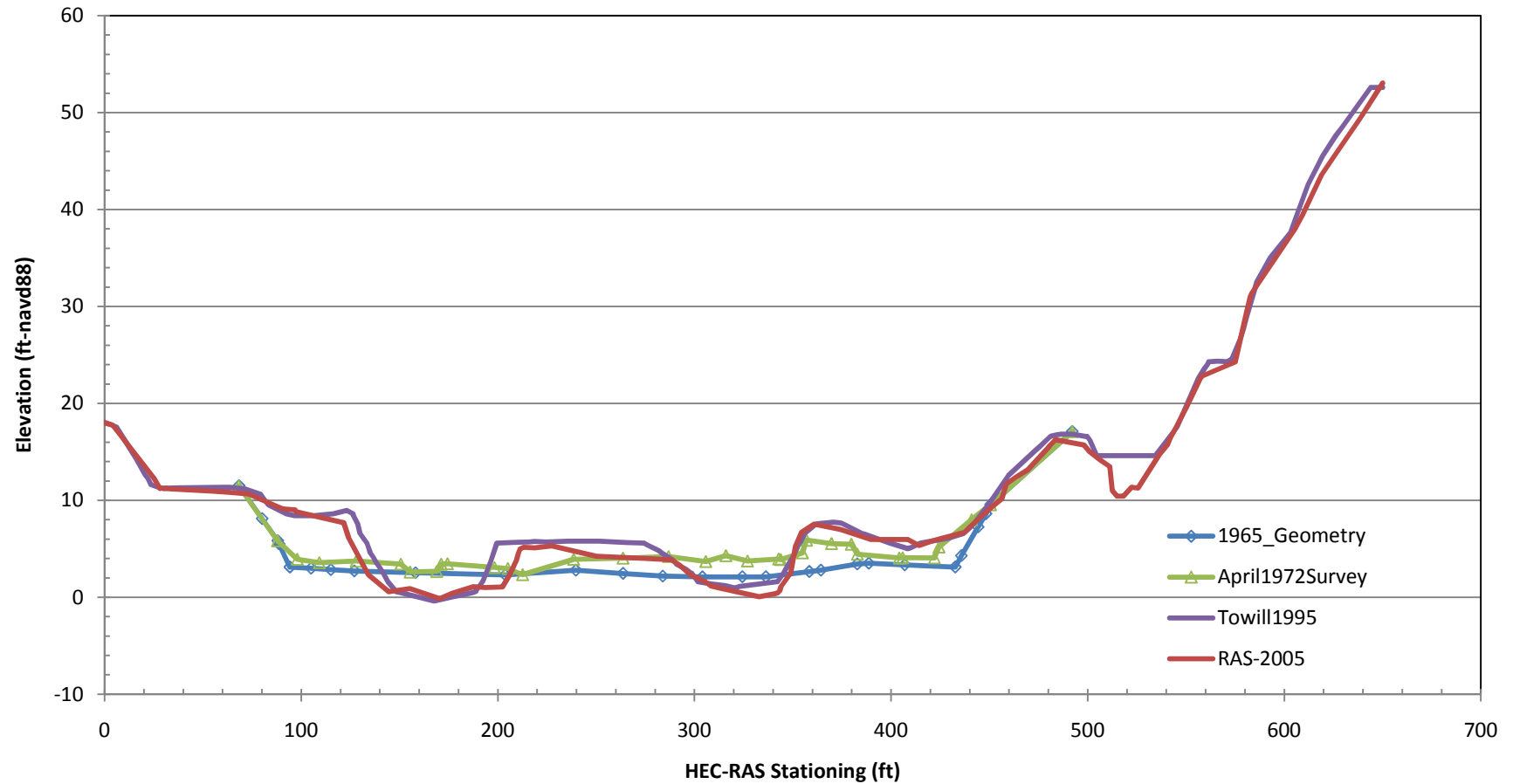
**Sediment Transect 133+00**  
HEC-RAS Sta 134+20.99\HEC-6T Sta 13421



**Sediment Transect 142+00**  
HEC-RAS Sta 142+34.43\HEC-6T Sta None

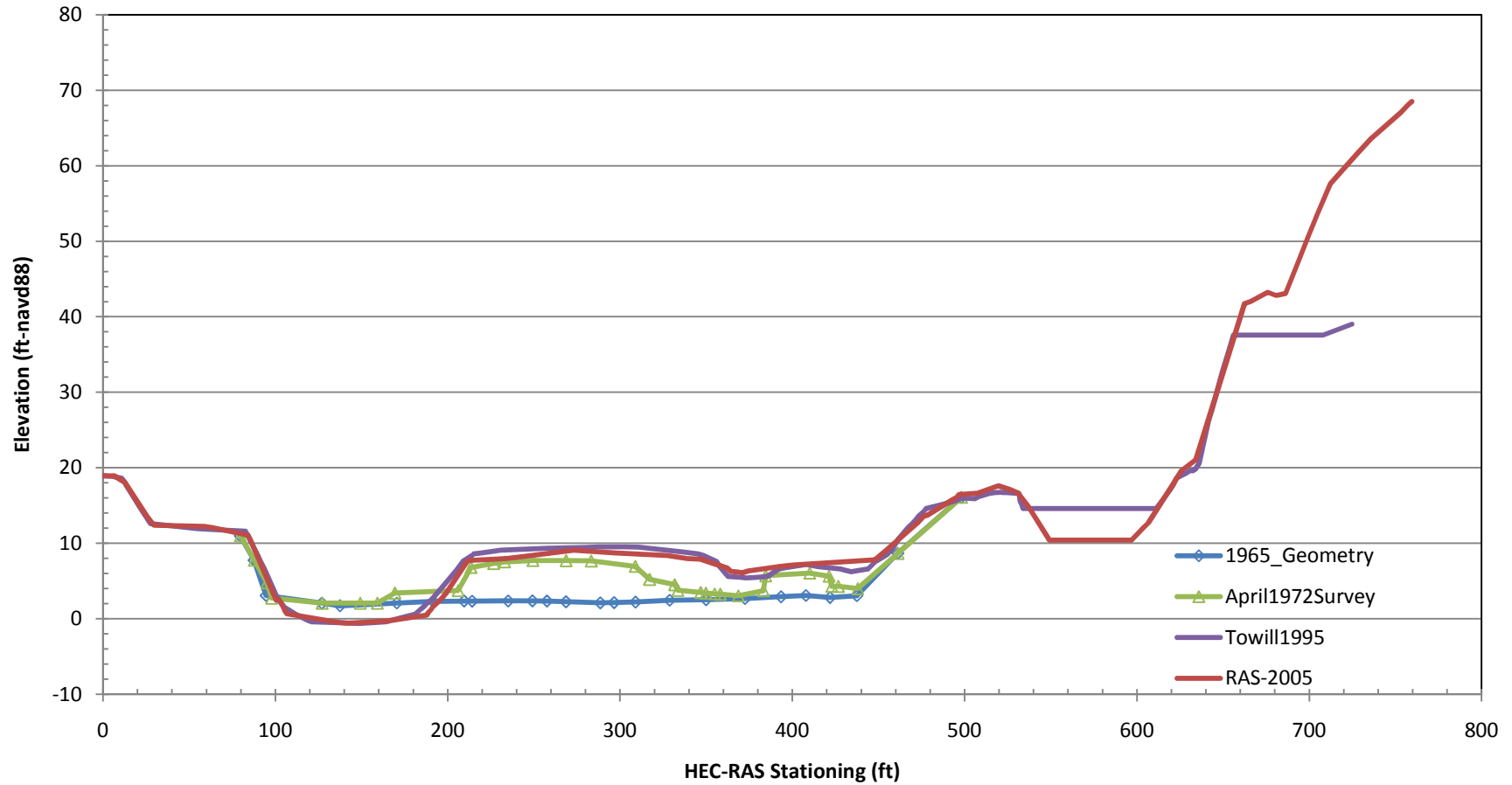


**Sediment Transect 163+00**  
HEC-RAS Sta 162+78.67\HEC-6T Sta None





**Sediment Transect 175+00**  
HEC-RAS Sta 175+35.65\HEC-6T Sta None



### Sediment Transect 184+00 HEC-RAS Sta 184+18.04\HEC-6T Sta None

