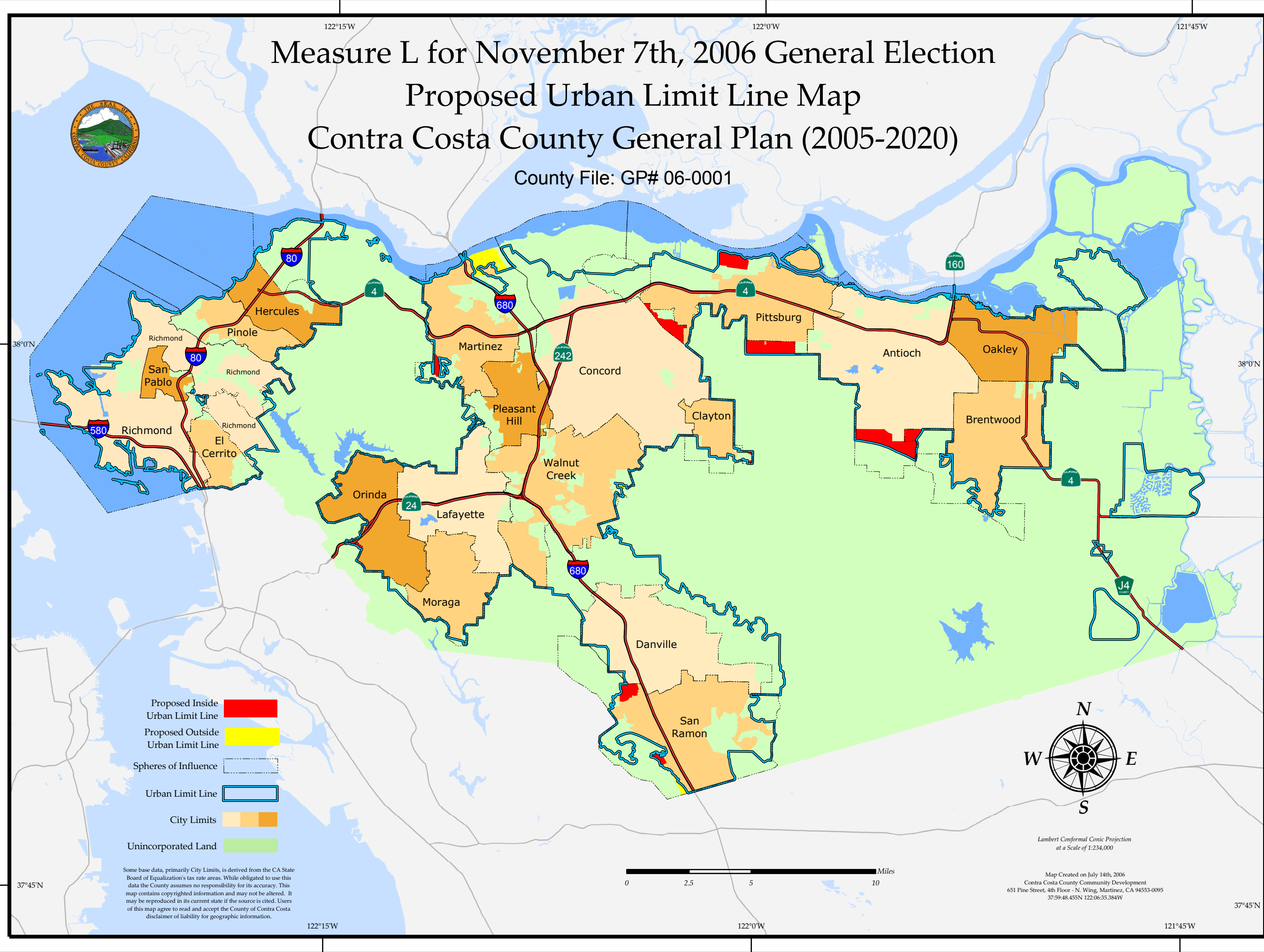


Measure L for November 7th, 2006 General Election Proposed Urban Limit Line Map Contra Costa County General Plan (2005-2020)

County File: GP# 06-0001



- Proposed Inside Urban Limit Line
- Proposed Outside Urban Limit Line
- Spheres of Influence
- Urban Limit Line
- City Limits
- Unincorporated Land



Lambert Conformal Conic Projection
at a Scale of 1:234,000

Map Created on July 14th, 2006
Contra Costa County Community Development
651 Pine Street, 4th Floor - N. Wing, Martinez, CA 94553-0095
37:59:48.455N 122:06:35.384W

Some base data, primarily City Limits, is derived from the CA State Board of Equalization's tax rate areas. While obligated to use this data the County assumes no responsibility for its accuracy. This map contains copyrighted information and may not be altered. It may be reproduced in its current state if the source is cited. Users of this map agree to read and accept the County of Contra Costa disclaimer of liability for geographic information.

37°45'N

37°45'N

122°15'W

122°0'W

121°45'W

38°0'N

38°0'N