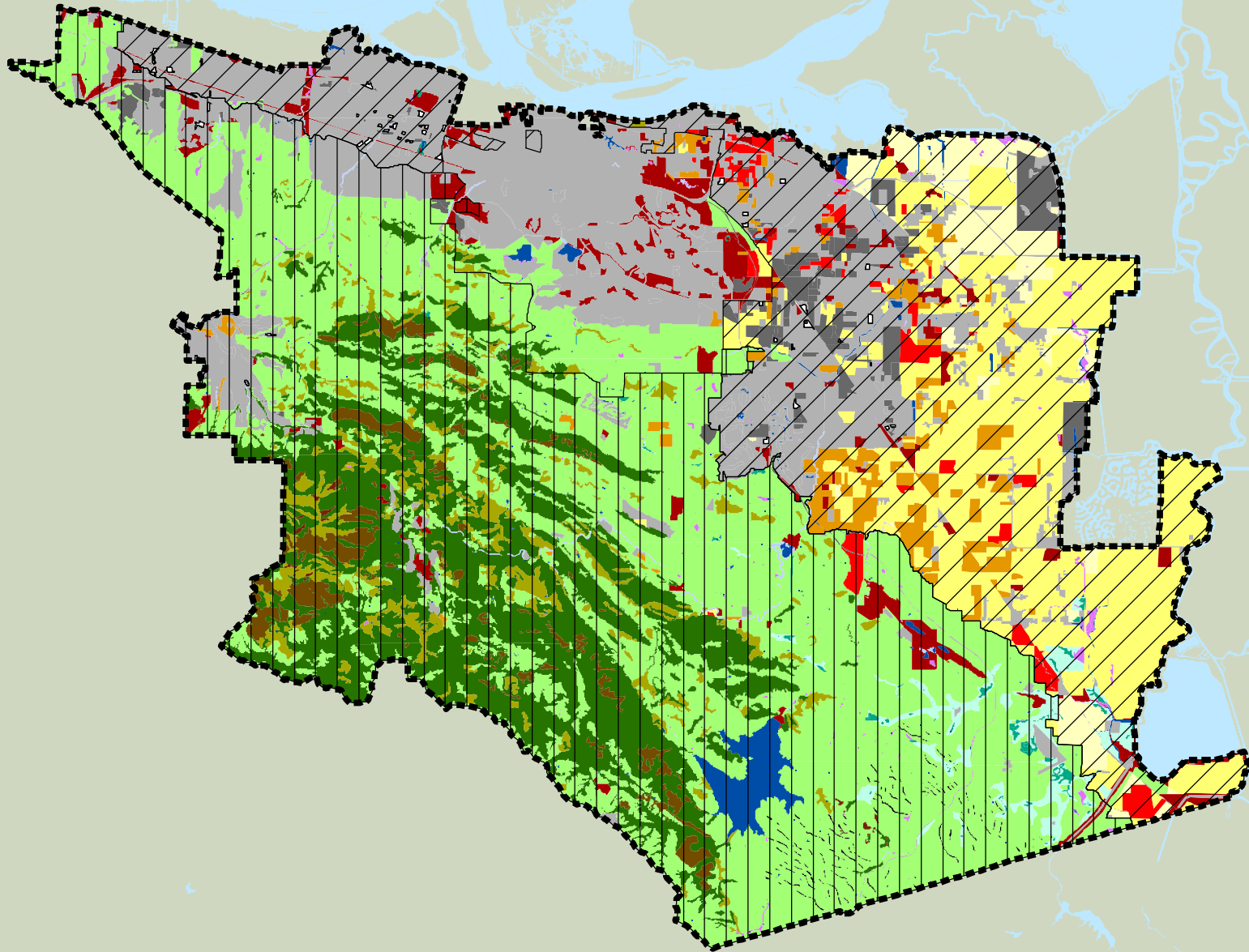


Development Fee Zones (adapted from Figure 9-1 of the HCP/NCCP to reflect 2007/2008 fee amounts--fees subject to change on 3-15-08)



Legend

Inventory Area

Land Cover Types

- alkali grassland
- alkali wetland
- aquatic
- chaparral
- cropland
- future urban
- grassland
- non-native woodland
- oak savanna
- oak woodland
- orchard
- pasture
- pond
- riparian
- rock outcrops
- ruderal
- seasonal wetland
- slough/channel
- urban, turf, landfill or aqueduct
- vineyard
- wetland
- wind turbines

Future Urban areas are subject to the development fee unless exempt. See Ordinance and Chapter 9.3.1 of the HCP/NCCP for more information.

FeeZone (fee per acre)

- Zone I (\$12,457)
- Zone II (\$24,914)
- Zone III (\$6,229)

