

Action 20: Improve Public Education Opportunities Regarding Resource Management in the Caldecott Corridor

Description:

Develop displays and interpretive materials to inform visitors of basic aspects of conservation biology, habitat fragmentation, wildlife corridors, the role of the ridge over the Caldecott Tunnel as a wildlife corridor, wildfire history and prevention, geology, or local cultural history. Displays/signs/interpretive materials could be placed at either end of the corridor, in Sibley Regional Park, in Tilden Regional Park, on Fish Ranch Road, or in the Claremont Canyon Regional Preserve. Displays could be posted along trails, at parking lots, or in and around park buildings. Geologic displays could be created at the old quarry sites. An interpretive brochure or trail guide is also possible. The intent of these actions is to improve public awareness of the resource management issues of the Corridor while maintaining current, low impact public uses of the area in order to protect corridor function and limit ignition risks. Existing buildings should be used and attractions in the center of the Corridor should be avoided.

Implementation:

Secure volunteers to work with EBRPD, EBMUD, the City of Oakland, UC Berkeley, and community groups to develop educational materials and obtain funding for producing them. The College of Natural Resources at UC Berkeley has recently endorsed an agreement with the EBRPD to develop the Gelsten House in Claremont

Canyon Regional Preserve as an Urban/Wildland Management and Education Center, and this may be an appropriate location or mechanism for implementing this action. Actions could also be coordinated with the efforts of the North Hills Landscape Committee, which was integral to creating the Fire Memorial Garden. It is now working to establish a Firestorm Exhibit Center which will emphasize fire risks and mitigation measures, as well as the potential for developing a model fire-safe greenbelt along Highway 24.

Fiscal Impacts:

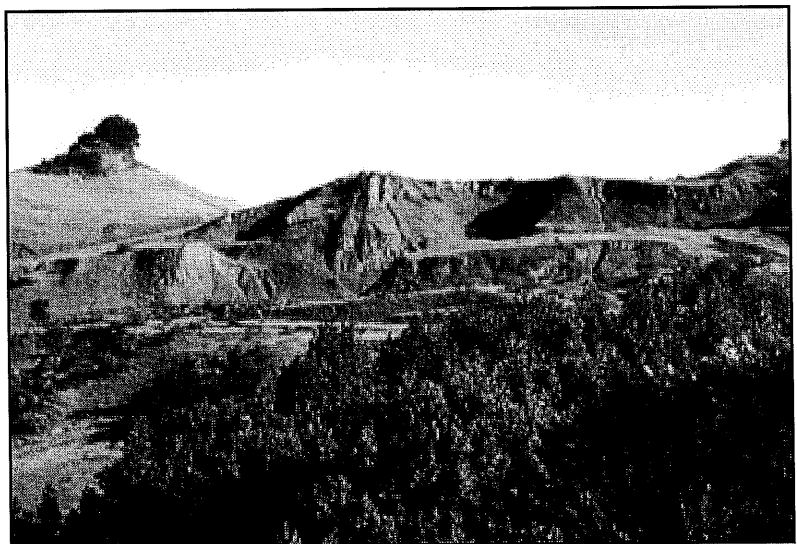
Estimated cost to develop and print brochure: \$1500. Estimated cost to develop and build an interpretive display: \$3000. The Firestorm Exhibit Center structure is estimated to cost \$150,000, plus an additional \$50,000 to \$100,000 for interpretive materials.

Advantages:

Increase awareness of the important resource management issues for which the Caldecott Corridor is a microcosm.

Cautions:

Educational improvements should maintain the current low impact public uses of the Caldecott Corridor.



This former quarry southeast of the Caldecott Tunnel exposes unique volcanic formations of the Sibley Regional Park (J. Kopchik)